

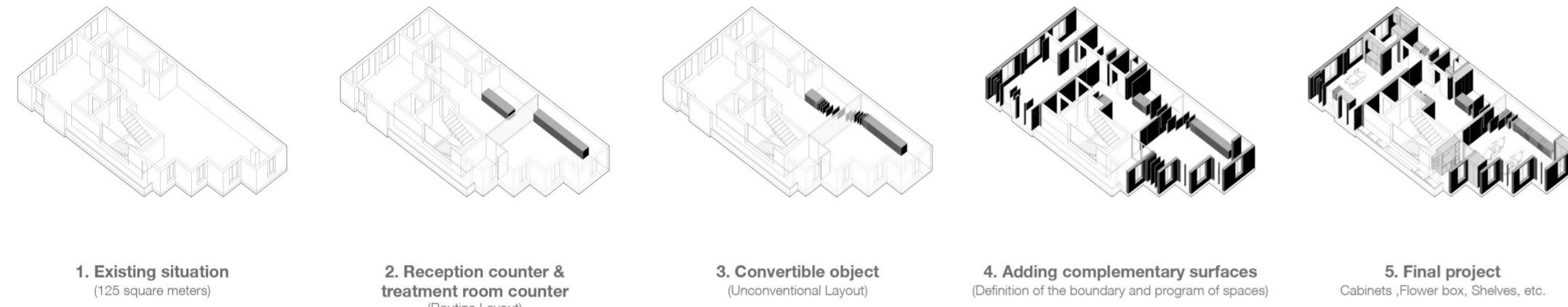
Sonrisa Gallery Clinic

Location: Tehran, Iran | Year: 2023 | Category: Interior Architecture

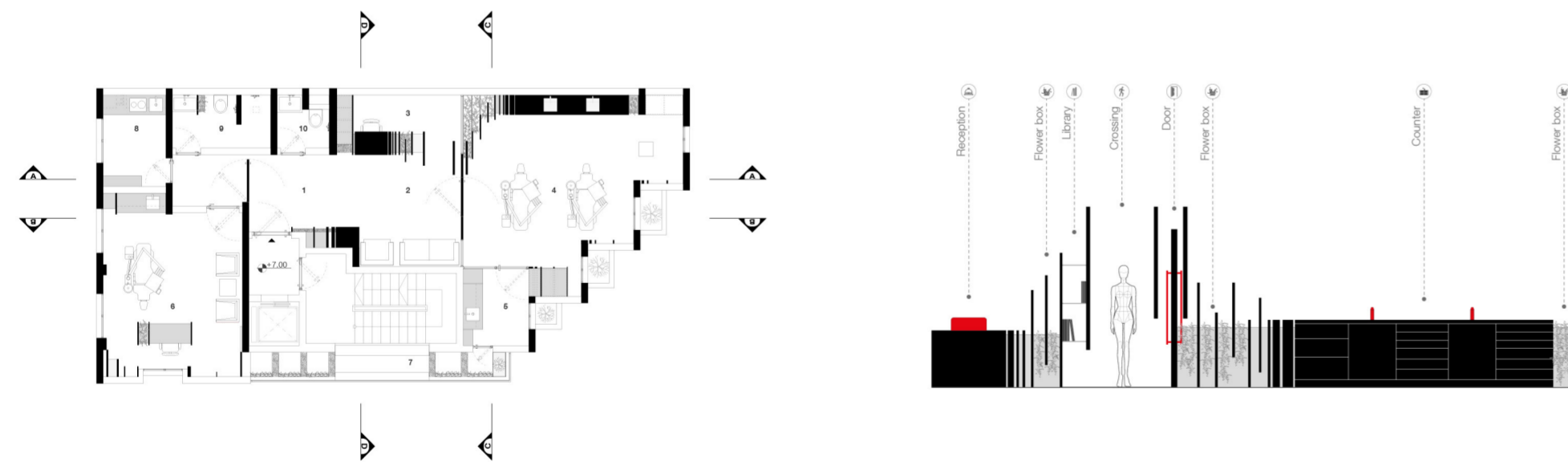
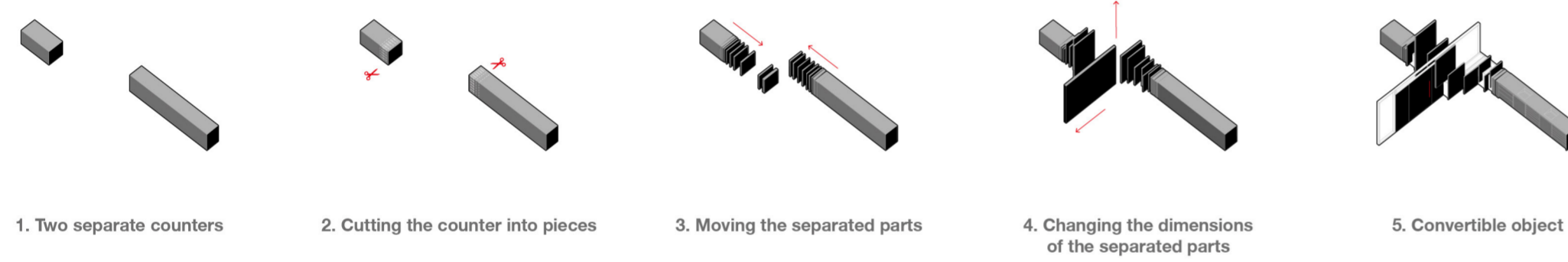
Sheet No. 01

Sonrisa Gallery Clinic with an area of 125 square meters is located on the second floor of a medical complex in Chitgar district of Tehran. During the initial visits of the project, the design team faced a rectangular plan, along with fractures on the north side, with a height restriction in the interior space due to the placement of structural and mechanical devices on the ceiling. Also, the client requested that the project should not be reminiscent of conventional medical spaces and provide a different spatial experience to its users and visitors. Therefore, we decided to explore how we can achieve a new atmosphere for the project by combining the material and color palette of a space with another usage in order to transform the audience's experience of a medical space. Therefore, our strategy was inspiring from gallery spaces and placing an abstract object at the center of the space, which we had previously experimented with in another project. By doing this, the audience's experience was changed from the conventional medical space to the discoverable space, and this change provided a new platform for her presence in the project. The counter, in the form of a convertible object in the center of the project was transformed by crossing from the border of the reception hall to the treatment room, and converted itself into elements with the functions such as green space, book placement area, entrance door, etc. with a layered structure. In this project, the mentioned object is like creatures in nature that change their external form during hunting, mating, camouflage, etc. and return to their previous state again. In order to define the desired functions, it breaks itself and defines them in the form of active and dynamic surfaces and rests again in a corner of the space and its audience watches this moment as if the time is frozen. In the following, we tried to achieve a homogeneous structure in the space by expanding the mentioned idea, and by using the project's layered gene in the walls, we gave identity to the fractures in the plan, improved the height experience of the audience from the space and defined our desired program. In this regard, we divided the length of the project into three sections: the reception hall, the treatment room and the VIP section, which were separated by two uncertain borders. The reception hall included a counter, living room, reception area and WC. The treatment room also included dental units, CSR room and equipment closet, which had independent access to the VIP room through a long terrace with a city view. Finally, the VIP section, which includes the VIP room, kitchen and bathroom, is separated from the reception hall through one of the surfaces by a different way.

Design Process



Convertible Object



Plan 01. Entrance 02. Waiting Area 03. Reception 04. Treatment Room 05. CSR Room 06. VIP Treatment Room 07. Terrace 08. Kitchen 09. Bathroom 10. WC

Front view of the convertible object

