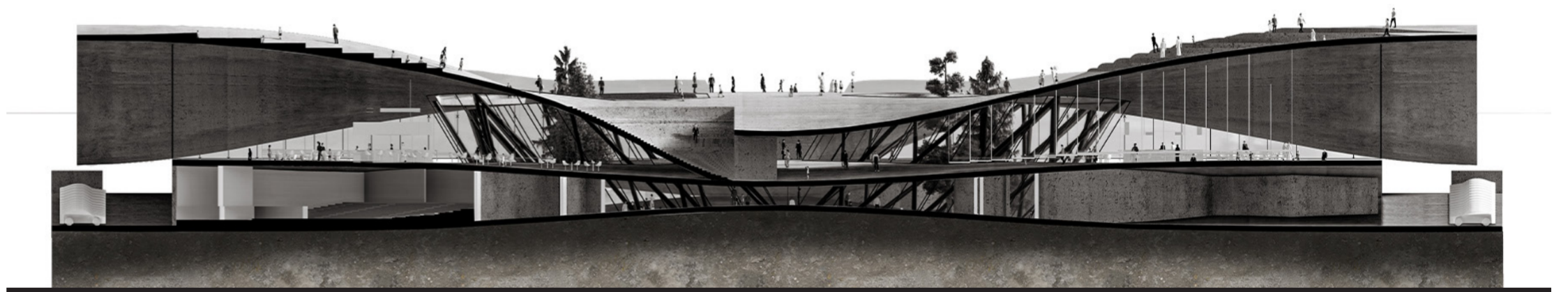
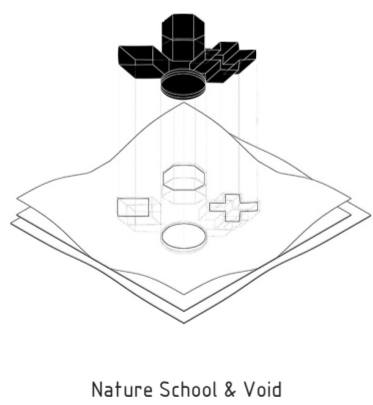
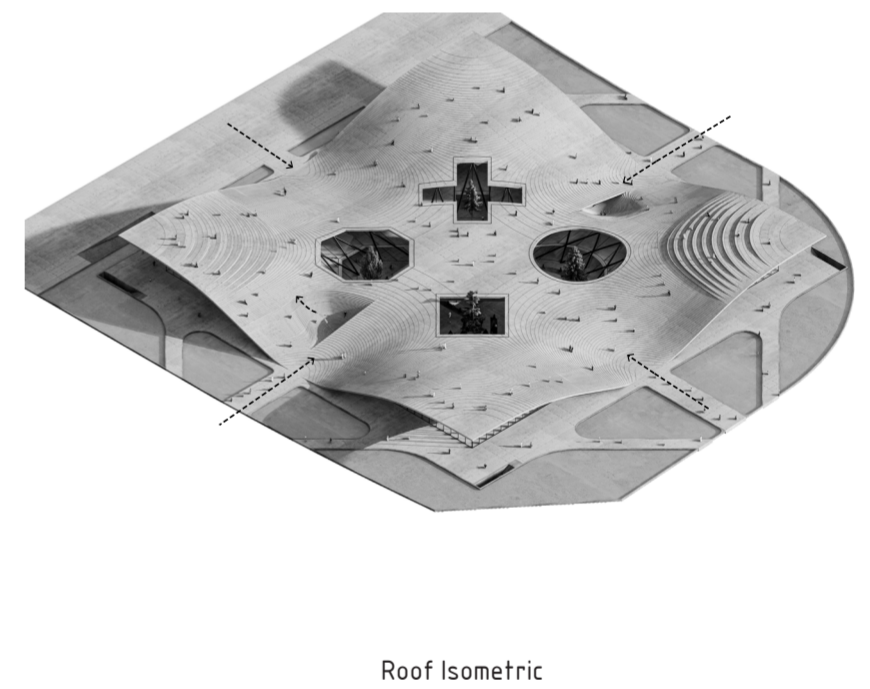
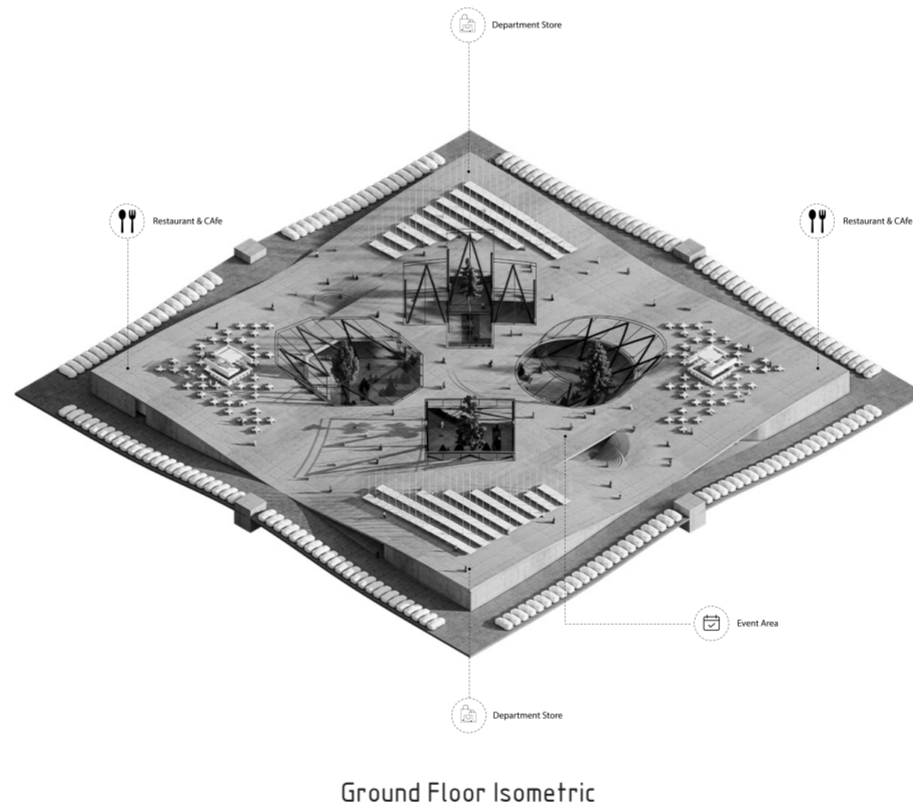
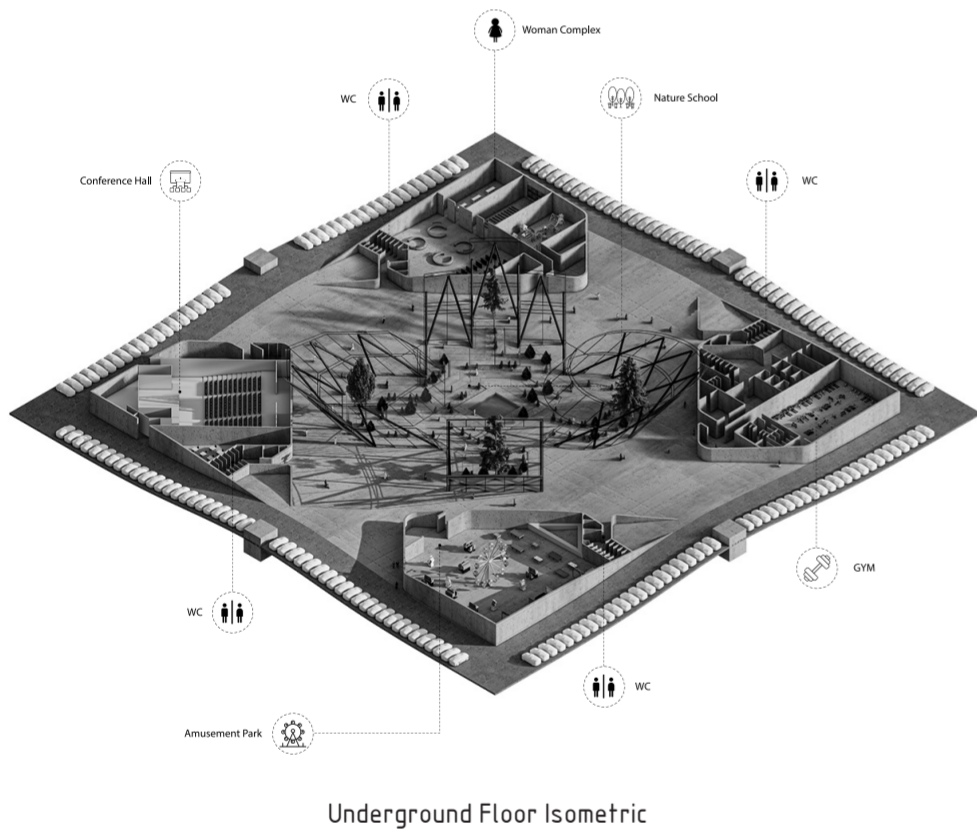
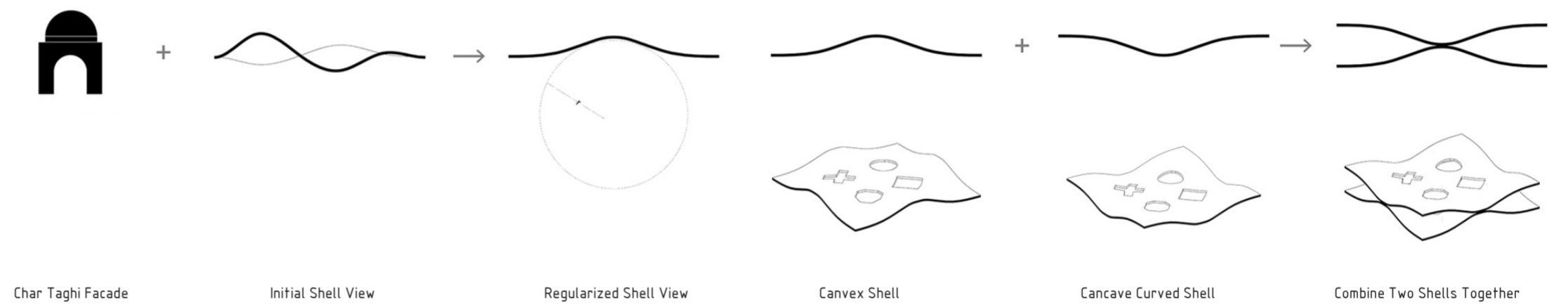


In the following, there are 4 large voids, each of them was a symbol of one of the prominent building of Yazd (circle: symbol of the dome of Yazd Great Mosque) - (hexagon: symbol of Daulat Abad Garden Windmill) - (cruciform: symbol of Charsu in Khan Bazar) and (square: the symbol of common central courtyards inside houses) were reduced from the surface out to respect the Iranian women and as a index of their absence in the social buildings of the past and society, as well as in order to respect and represent the Yazd Figure/Ground.



These 4 large Voids, each of them represents one of the social building of the past, and due to the lack of presence of women in the project, they are directed obliquely towards the center of the project and finally they meet each other in the lower level to create one single super void to Show a unified and coherent form as a sign of unity within the project. Within this integrated space, which can be seen from all angles of the project and is connected with the open space, the project's nature and landscape school has been defined inside it, and in the center of this space is a classic square-shaped pond, represent of the old courtyards of the historical building of Yazd. The result of this work was to create an amazing spatial experience, as we left the classic definition of the floor in this project and the levels are fluidly transformed into each other.

