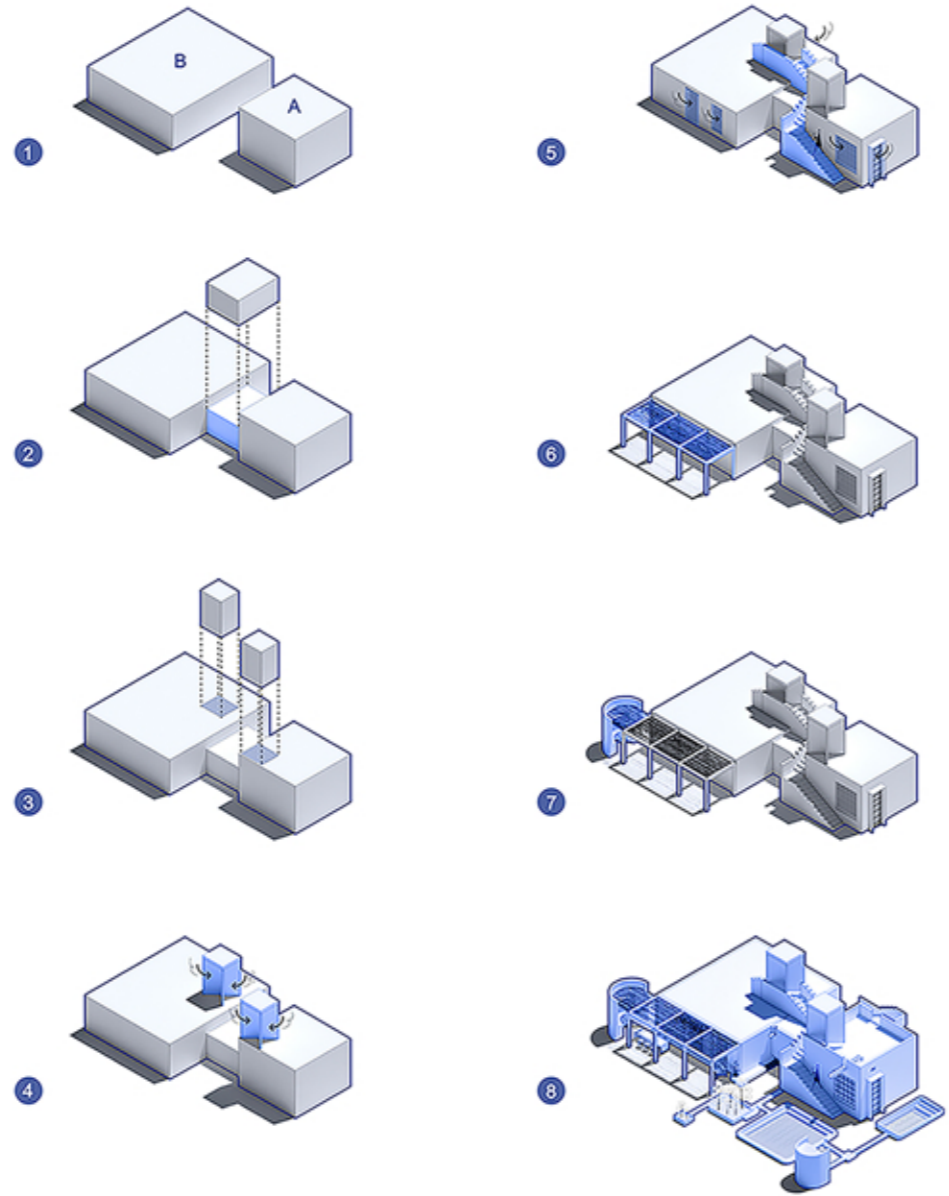
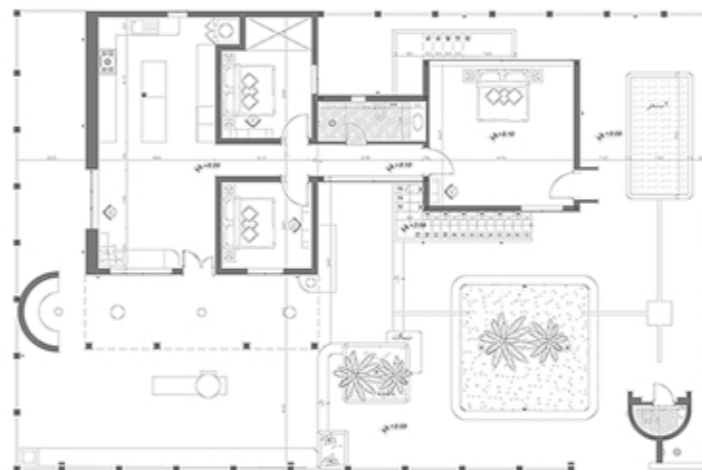


A HOUSE LOOKING TO THE SEA

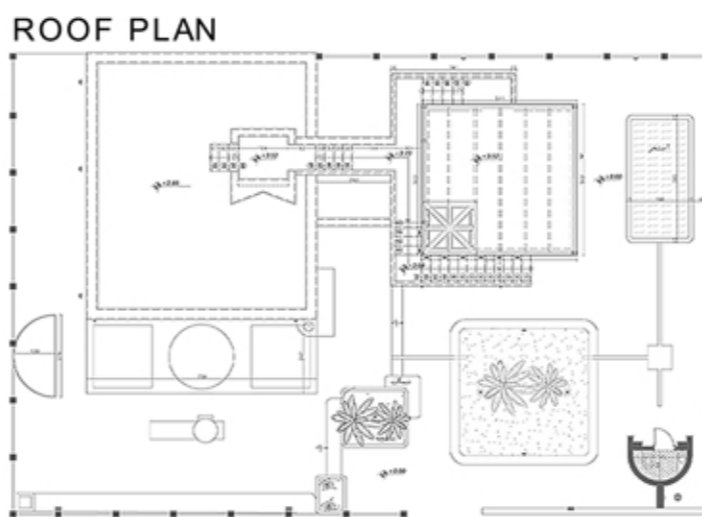
The project is located in Qeshm Island in the Persian Gulf, within the warm southern microclimate of Iran. Gacho village is expanding due to non-natives interest in Qeshm Island, leading to uneven growth. The same expansion seen on the country's northern coasts is now evident in Qeshm. This growth, driven by capital, results in mismatched architectures in Qeshm and Hormuz. Often, the region's traditional architecture is overlooked, leading to out-of-place designs. Qeshm, including Gacho, faces energy issues, especially with gas and electricity. The village is closely-knit, so new designs must not disrupt the visual harmony. The design team was given a project on a site with a small, old 40-square-meter building in Qeshm, a place with rich traditional architecture. The team prioritized this heritage in their initial design considerations



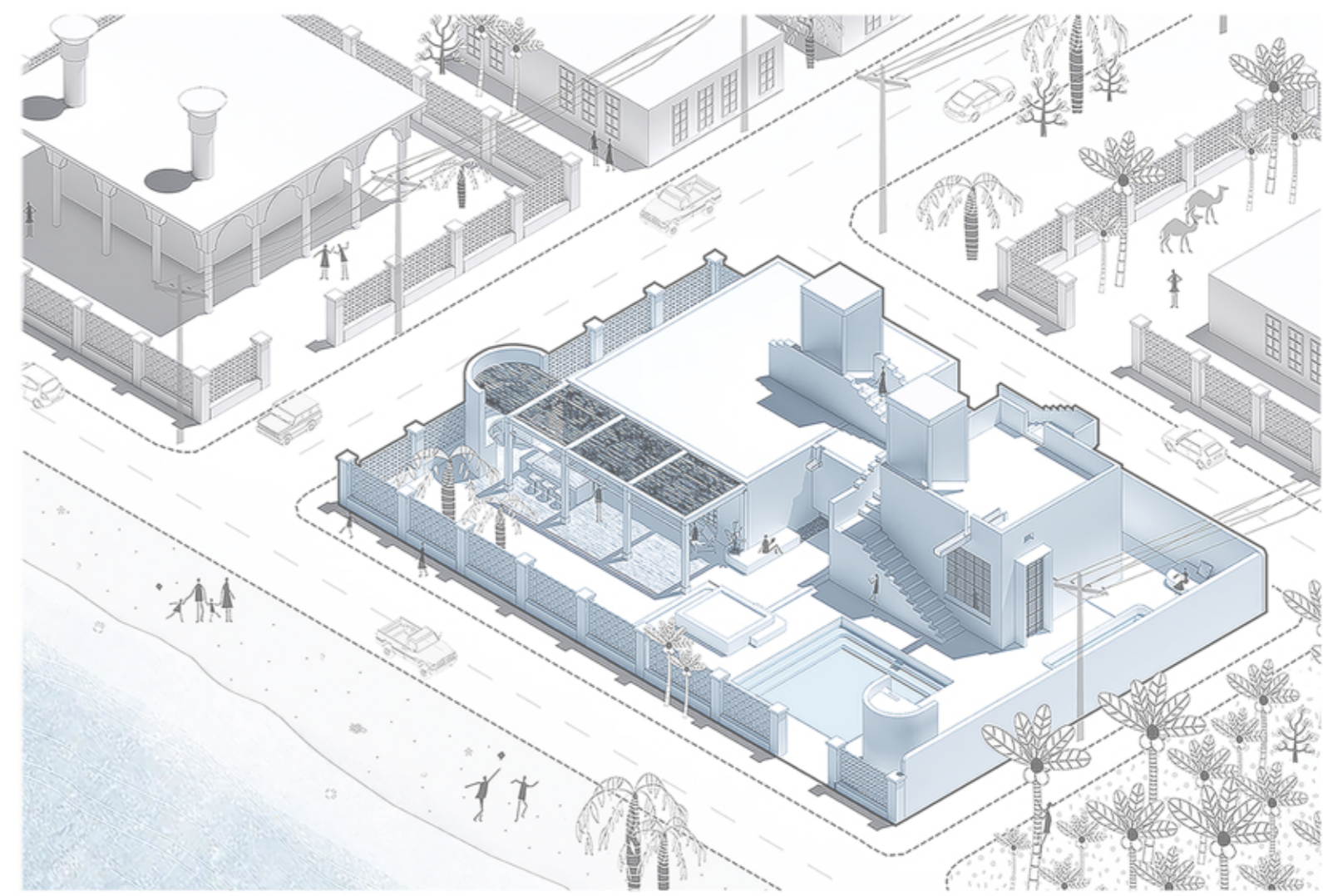
AFTER



FIRST FLOOR PLAN



ROOF PLAN



BEFORE

