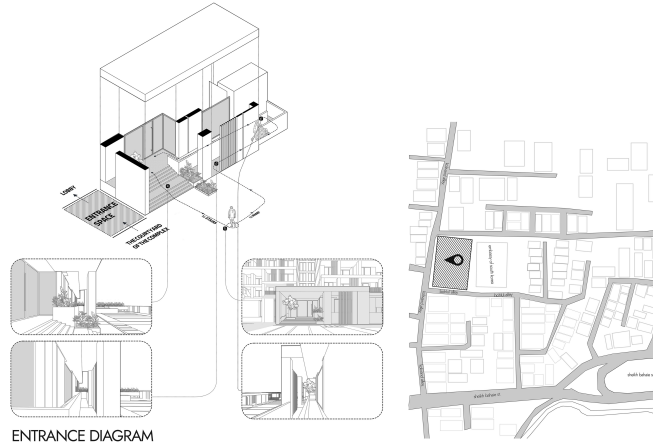


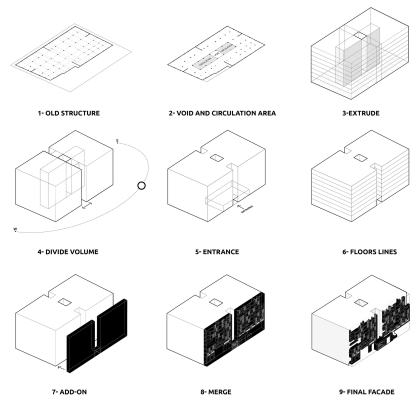
SHEIKH BAHAEI RESIDENTIAL BUILDING



Sheikh Bahaei residential building project is located in Vanak, Tehran. This region, with mainly residential land use, is assumed among the more valuable zone on Tehran metropolis. This building is constructed with a plot area of nearly 4800m² and gross area of nearly 30000m² including a ground floor with a lobby, parking lot, and residential units at the same time, three basement floors with parking lot and welfare common spaces, and seven residential floors. This project includes a total of 77 residential units with a space area of 165360m². It should be noted that the project was referred to the counselor team for design an execution while the excavation phase had been finished and the foundation phase had been completed. The main problem in relation to the project design was based upon two major issues. First, how can the number of apartments that are adjacent to each other be reduced despite the numerousness of the apartments on each floor in order to avoid disturbing the residents' comfort?

Second, how can the density of the residential units in a complex with numerous units be represented in the main building facade as a factor with identity and function in order to establish an integrity between the internal and external parts of the building?

Apropos of the first issue, considering the relatively extensive plot width (almost 75m), two completely separate zones (from the ground floor upward) were assumed leading to the division of the plan of the residential floors into two blocks with 5 or 6 adjacent units. This resulted in better privacy of the units and less-populated and less-crowded common spaces and, consequently, more comfort of the residents.



CONCEPT DIAGRAM

