

BORNAMI HOME (BORNA & NAMI)

MET THE BORNAMI CLIENT THROUGH ANOTHER PROJECT OF MINE BACK IN 2017. HE WANTED TO RENOVATE A HOUSE FOR HIS WIFE AND CHILDREN SO THAT IT MAY BE REMINISCENT OF A PATERNAL HOME THROUGHOUT THE YEARS GROWING UP

A COUPLE OF MONTHS LATER, HE FOUND THE SPOT ON NO. 2, LESSANI STREET, IN HAMID DEAD-END ALLEY. IT WAS A 60-YEAR-OLD HOUSE BUILT BY A BELGIAN ARCHITECT. THE BUILDING RECEIVED LIGHT ON THREE SIDES AND WAS LOCATED ON A STEEP SLOPE WITHIN A WOODED SITE .

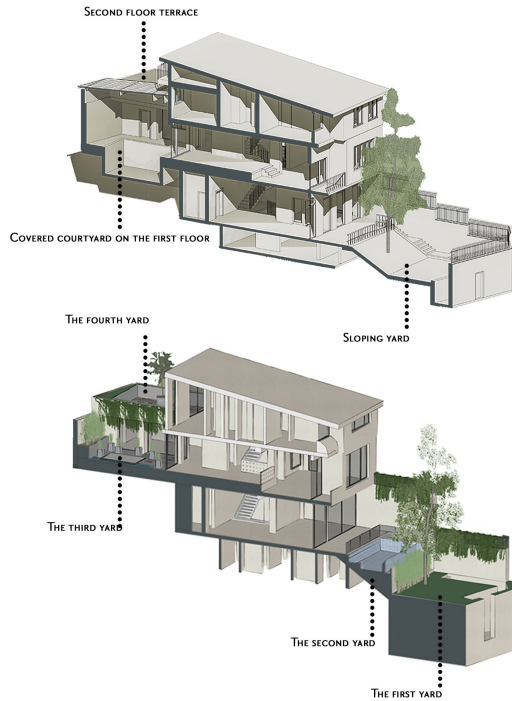
ONE CAN ACCURATELY CALL THE BORNAMI PROJECT A COLLAGE OF THE CLIENTS DEMANDS — A PROJECT THAT IS AN AMALGAM OF SEMANTIC ELEMENTS AND STRUCTURAL COMPONENTS IMPLEMENTED ON THE EXHAUSTED BODY OF A SIXTY-YEAR-OLD BUILDING .

THE FORMATION OF THE PATERNAL HOUSE AS A PLACE WITH THE THEME OF STRUCTURAL GROWTH WITHIN A CIRCLE OF SECURITY AND PEACE, SYNTHESIZING THE JOYALITY OF SPACES IN A TRILOGY OF COZINESS AND SPATIAL SIMPLICITY ALONG WITH FLUIDITY, IS THE TURNING POINT OF THE GIVEN PROJECT .

THE BORNAMI HOUSE IS LOCATED ON A SLOPED LAND, WITH NO FLAT SURFACE FOR A YARD DUE TO ITS CONSERVATIVE APPROACH. THE SHORT CEILINGS OF THE 60-YEAR-OLD BUILDING LIMIT THE POTENTIAL FOR AMBITIOUS PURSUITS WHEN IT COMES TO DESIGNING .

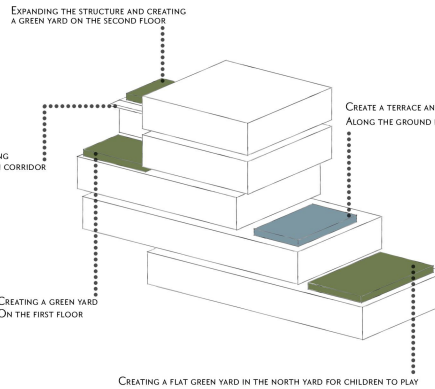
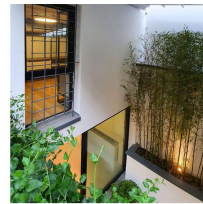
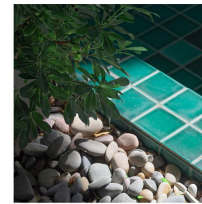
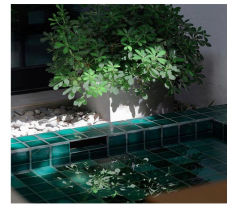
THE CREATIVITY INFUSED WITHIN THE SURFACE MAKING AND BUILDING THE FOUR BALCONIES INSPIRED BY IRANIAN ARCHITECTURE (SASSANID ERA) HAVE BEEN INCORPORATED TO MAKE UP FOR THE SITE'S RESTRICTIONS. THE FLUIDITY OF SPACE AND THE SMOOTH AND CONSTANT VISUAL ACCESS TO PUBLIC SPACES (FIRST AND SECOND FLOORS) HAVE RESONATED THE BORDERLESS PRINCIPLE OF THE INTERIOR AS WELL AS THE EXTERIOR .

THE MACRO FORMATION OF THE BODY IN A MONOCHROME STYLE REPRESENTS THE PEACE DOMINATING THE SPACE, ENLIVENED BY THE VISUAL DYNAMISM AND THE OUTER GREENERY SYNTHESIS .



BEFORE

AFTER



THIS IMPORTANT POINT COULD NOT HAVE BEEN MADE POSSIBLE WITHOUT REGARD TO THE TECHNICAL ASPECTS SUCH AS STRENGTHENING AND EXPANDING THE STRUCTURE FOR THE CREATION OF THE REQUIRED SPACE. SECURING THE SPACES SUCH AS BALCONIES, STAIRCASES, ETC. ACCORDING TO PROJECT SPECIFICATIONS HAS CONTRIBUTED TO THE TRANQUILITY NEEDED IN A PATERNAL HOUSE .

THE CLIENT'S DEMANDS AS WELL AS THE SITE'S SPECIFICATIONS WERE SET AS THE BASES FOR OUR CONCEPT'S DESIGN. BUILDING COURTYARDS ON DIFFERENT LEVELS FACILITATES MANKIND'S INTERACTION WITH NATURE WITHIN SPACES AND ALSO ENABLES THE ACCESS TO NATURAL LIGHT.

THE FORMER STRUCTURE INCLUDED A BUILDING WITH UTILITIES AND A PARKING LOT, THE GROUND FLOOR WITH AN ENTRANCE AS WELL AS TWO SEPARATE ROOMS LEADING TO THE SLOPED COURTYARD, THE FIRST FLOOR WITH THE LIVING ROOM AND A DIFFERENCE OF LEVEL WITH THE KITCHEN AND ITS SHORT CEILING, NEXT TO AN INDOOR POOL IN THE BACKYARD, THE SECOND FLOOR INCLUDING THREE SMALL BEDROOMS WITH A SHARED BATHROOM, AND A DRAWING ROOM WITH LITTLE WINDOWS OVERLOOKING THE BALCONY .