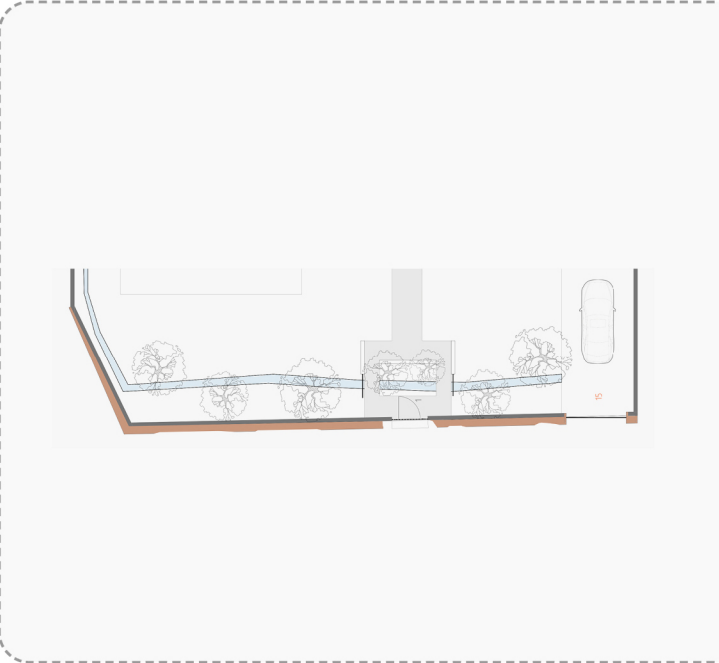
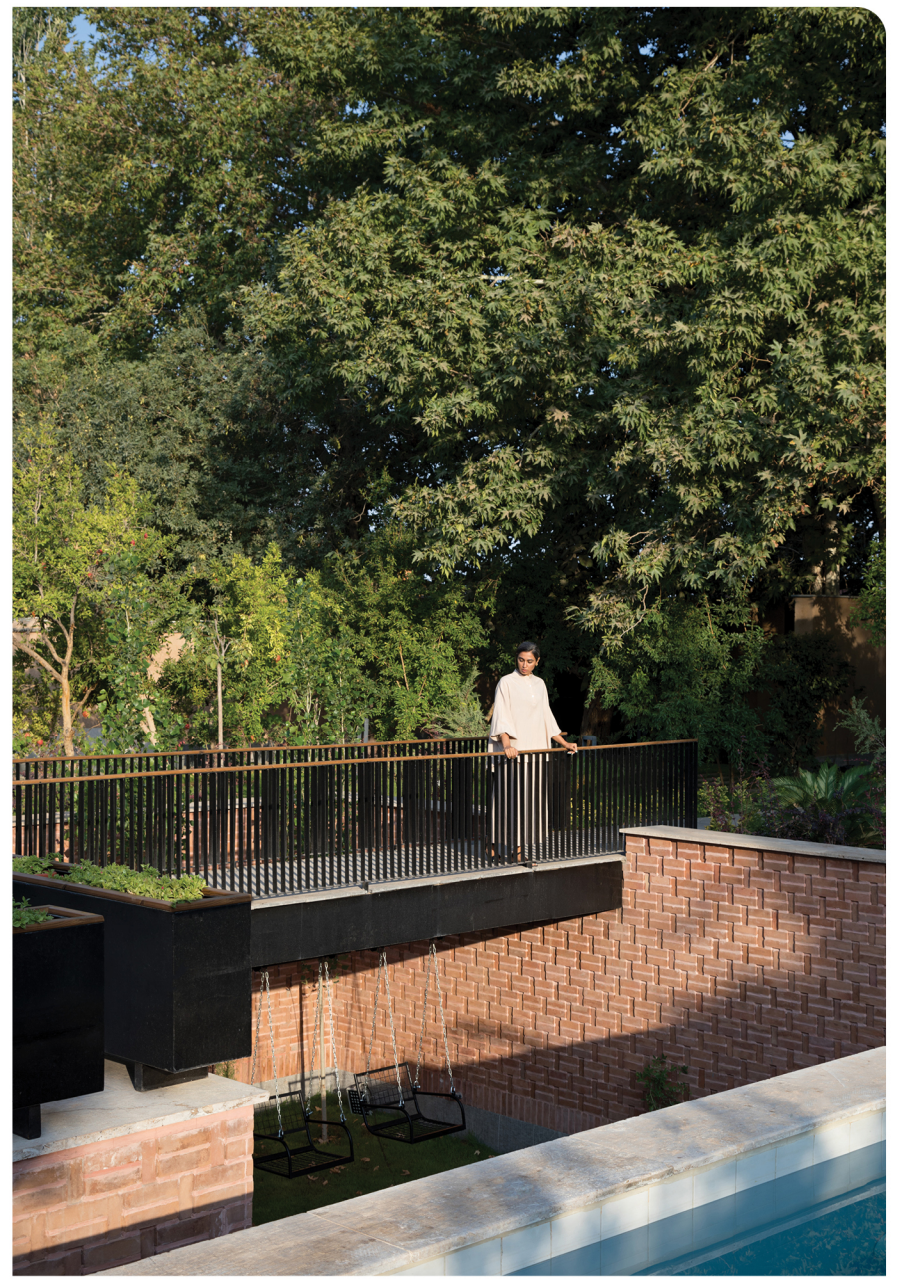


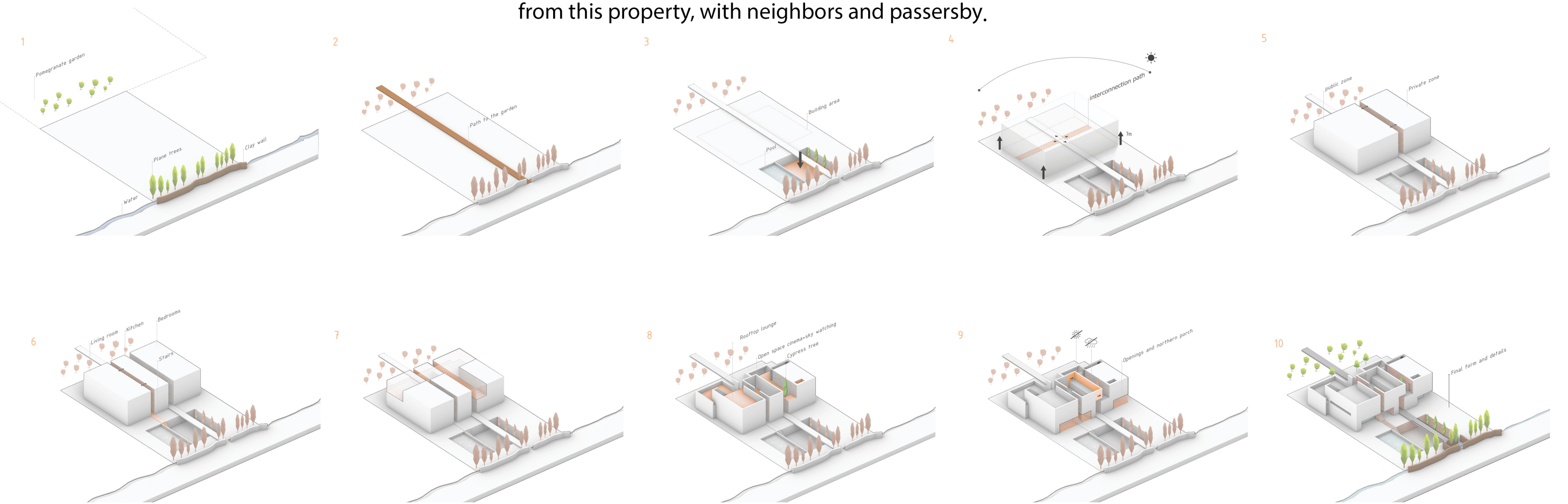
NARBON VILLA

KERMAN, IRAN



1 The residence is situated in a pomegranate garden in the historical city of Kerman, Iran. Initially, we preserved the thatched wall of the garden, while creating a new wall behind it. This allowed us to maintain the existing texture of the place and redefine its boundaries with alleys, giving a nostalgic touch to passersby and evoking old memories. By creating a gap in the wall and installing a glass door, we established an entrance to the garden. This served the purpose of sharing the garden's assets, such as the old sycamore trees and the watercourse that used to reach the agricultural land from this property, with neighbors and passersby.

Form Development Diagram

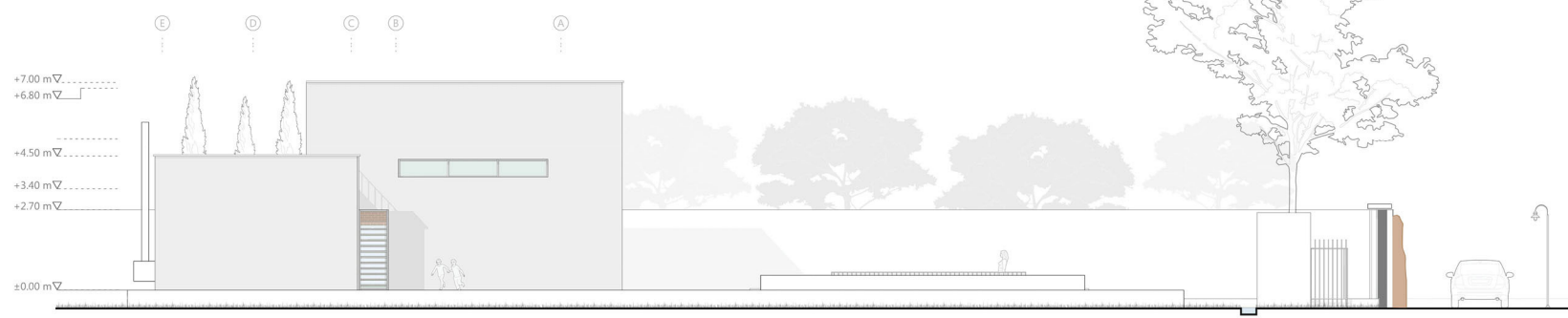


NARBON VILLA

KERMAN, IRAN



South Elevation



East Elevation



Section C-C



West Elevation



Section B-B



Section F-F

2

Upon entering, our aim was to connect the courtyard with the house. We achieved this through a sunken courtyard, which provides a cool shade during hot and long days. In this setting, we encounter a building that captures a portion of the sky, thanks to two deep rifts we refer to as "sky rifts." By utilizing sunlight, shadows, and architectural elements, the building presents itself differently throughout the day. Once inside, we have the option to remain in the house or continue towards the back garden. Conceptually, the house functions as a pavilion, drawing inspiration from the architectural heritage of this climate and culture