

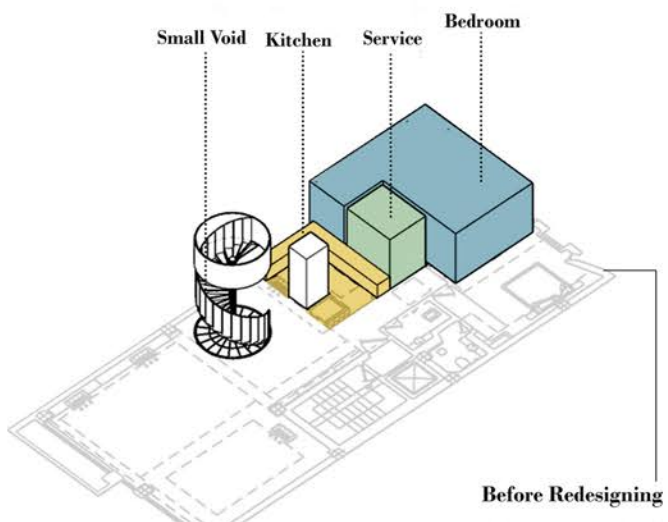
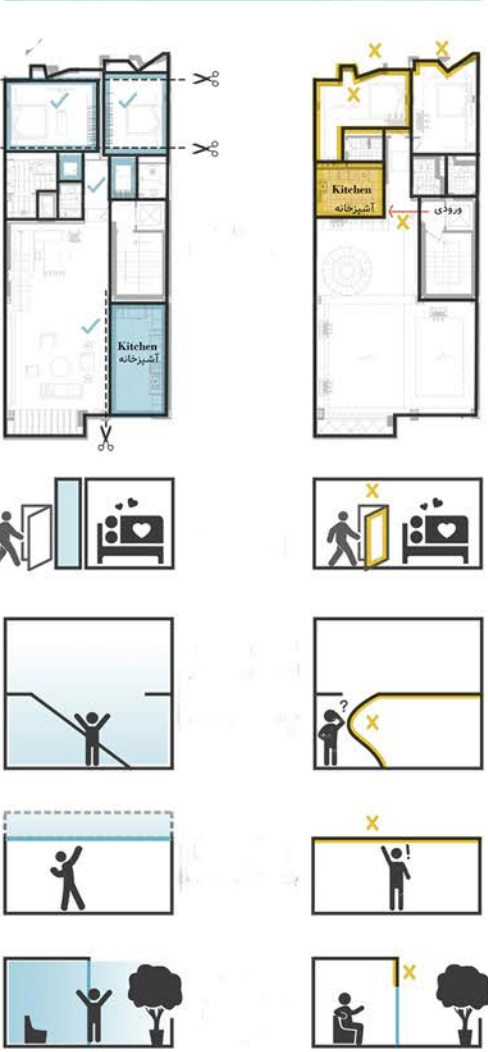
KHANA HOUSE

This particular accessible house with fantastic user-friendly is situated on the fifth floor of an apartment in a residential neighborhood in the south of Isfahan. The duplex house has an area of 260 square meters and initially had minimal amenities; nonetheless, the lack of accessibility unequivocally overshadowed the eminence of its spaces

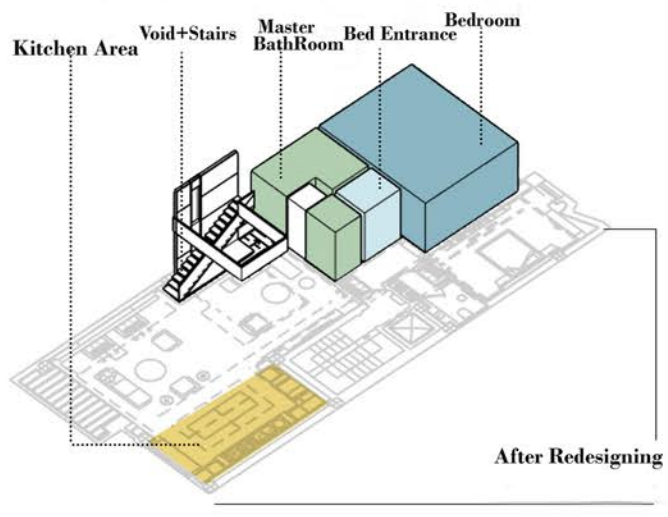
The living room's utilitarian space and the effective connection between the two floors were actually curtailed by the staircase that surrounded the house and its small opening in the center

There were also inaccessible rooms, a kitchen with no privacy, and general geometry issues that required to be addressed

After Ronovation Before Revovation



Before Redesigning



After Redesigning

