

The void used on the east side with small terraces placed in it was considered as the main dynamic point of the units, therefore all the small terraces of the rooms were installed in this void. For a better and stronger operation of these terraces, vertical blades were considered to control the visibility of the terraces and units relative to each other. Due to the placement of a building with a brick structure, the facade was placed in a calm relationship with the side of the building built on the side. Most of the volume of brick is in the vicinity of the adjacent brick building.

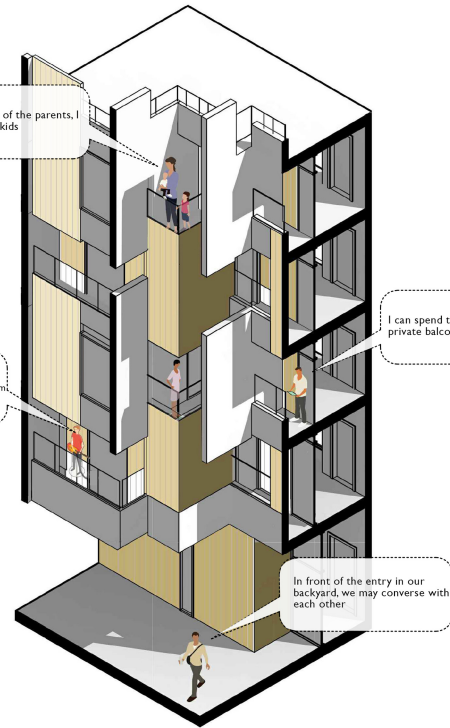
In the absence of the parents, I look after the kids

In this space, my pals and I work on music the majority of the time. My workspace is entirely segregated from the rest of the unit by the entrance door from the outside

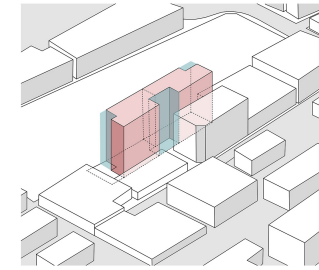
I can spend time by myself on my private balcony when I am alone

In front of the entry in our backyard, we may converse with each other

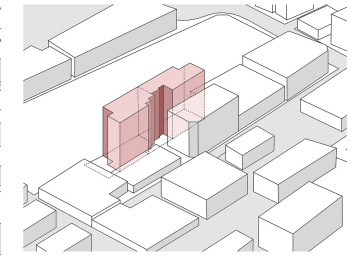
Another feature of the middle void is to create an entrance with a small courtyard. The access path to the building reaches a middle 5m x 5m space, which enters the ground floor parking lot from the left side, the ramp and minus-one parking lot, and from the right side it reaches the small courtyard and then the lobby. Next, the lobby was designed to be like to a local gallery for installing paintings or similar. It seemed that this space after the small courtyard of the building can revive some kind of forgotten spaces like museums and art galleries



A building with a width of 10 meters and a length of 50 meters was made by joining two city blocks, each of which was 10 meters wide



To illuminate the units, the voids have been removed from the main volume



In order to produce the most openings in the main facade, the largest void is placed at the intersection of two units. The main facade of the building has essentially been shaped by the development of this void in the main body

INTERACTIVE BALCONIES



1st & 3rd Floors Plan 0 1 2 5

