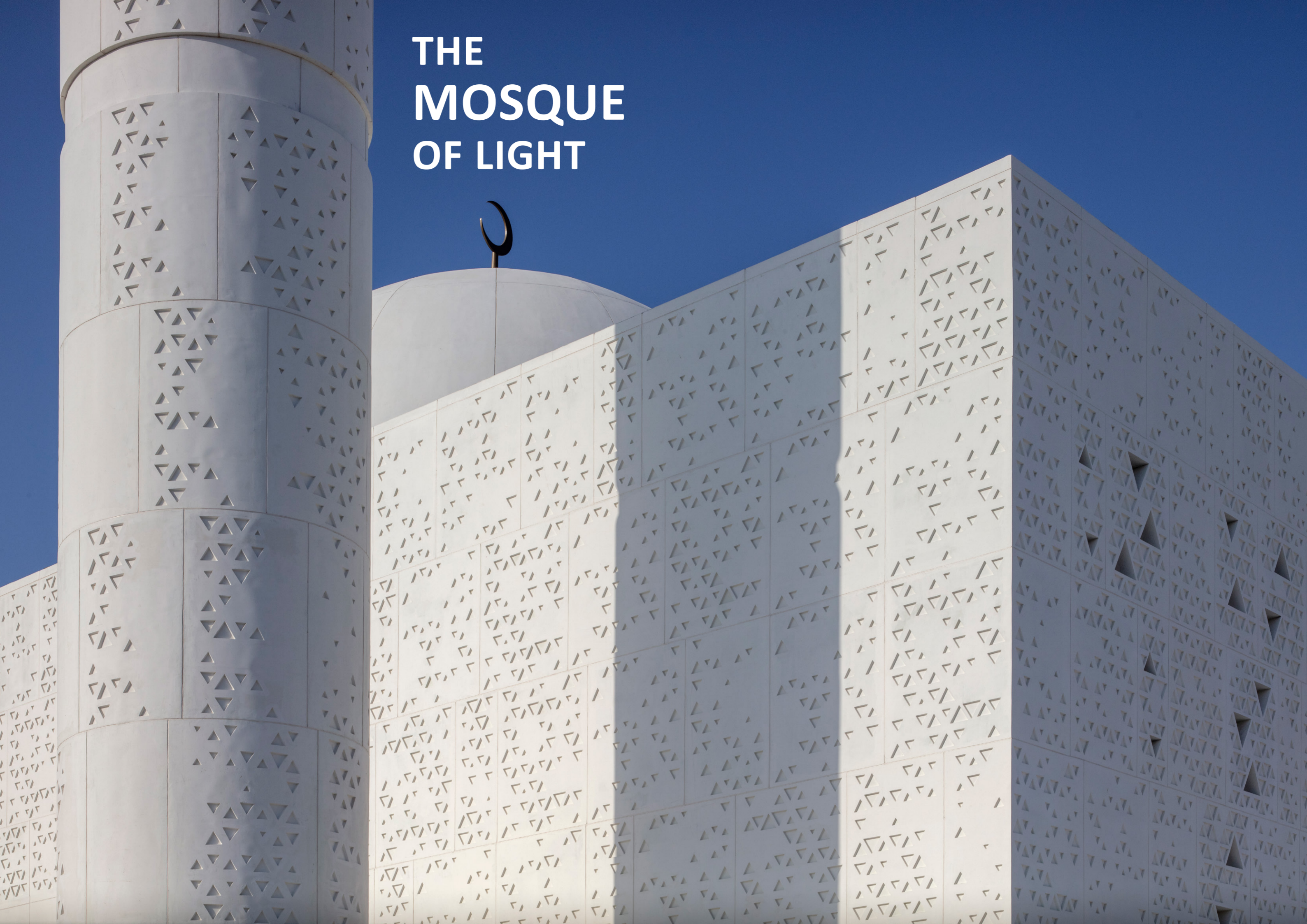


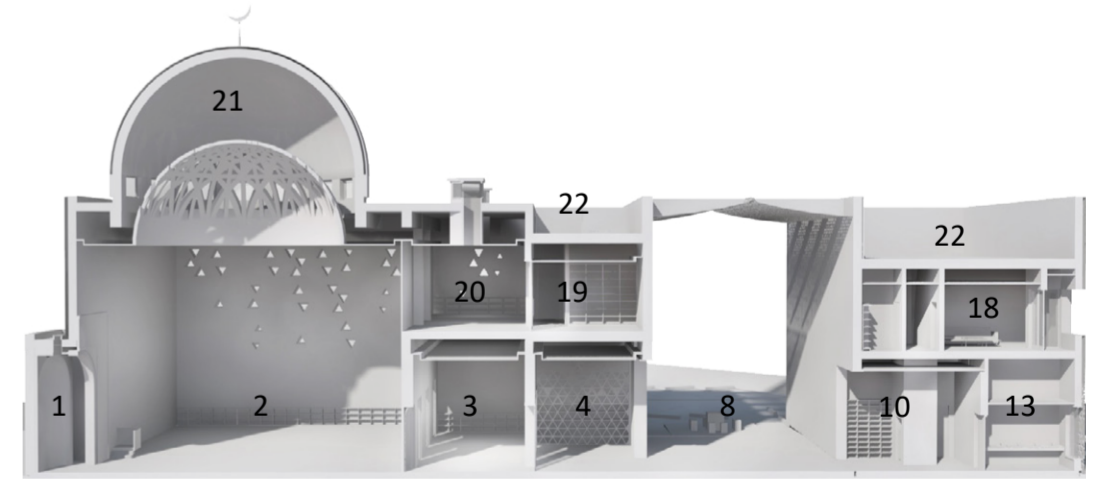
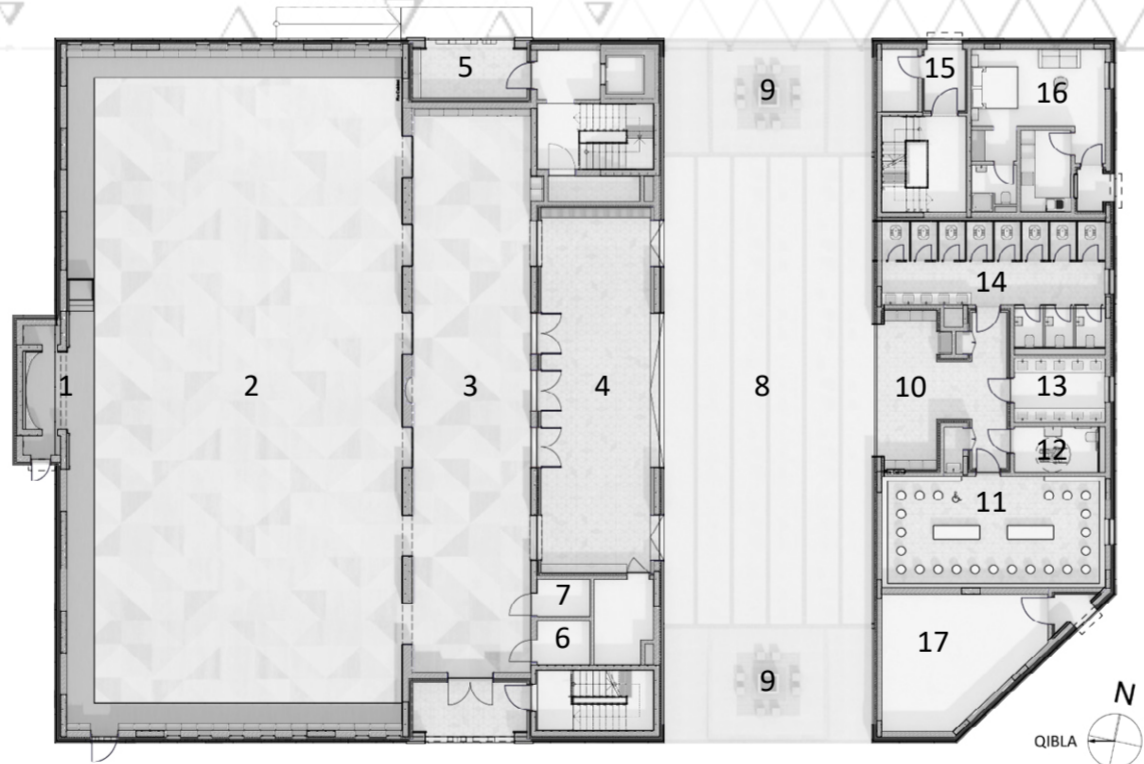
THE MOSQUE OF LIGHT



Prayer is a devotional act. It requires us to be totally present, quieting the mind to allow full immersion into prayer. The design incorporates a series of spaces that facilitate a transition from the outer everyday world to an inner spiritual experience.

The main building volume is separated into two blocks, one for prayer, and the other an ablution block, each representing the duality of body and spirit: the practicality of the ablution ritual and the spirituality of prayer.

A canopy stretches between both blocks to create a link and a distinction between the functions, while allowing for a transitional space prior to entering the main space of worship.



1. Mihrab 2. Main Prayer Hall 3. Secondary Prayer Area 4. Main Entrance Lobby 5. Female Entrance Lobby 6. CCTV 7. Store Room 8. Outdoor Prayer Area 9. Outdoor Ablution 10. Ablution Entrance Lobby 11. Ablution Area 12. Disabled WC 13. WHB Area 14. Toilets 15. Entrance to Imam & Moazen Apartments 16. Cleaner's Studio 17. Pump Room 18. Imam's Apartment 19. Lobby 20. Female Prayer Area 21. Double Skin Dome 22. Recessed MEP Roof Areas

