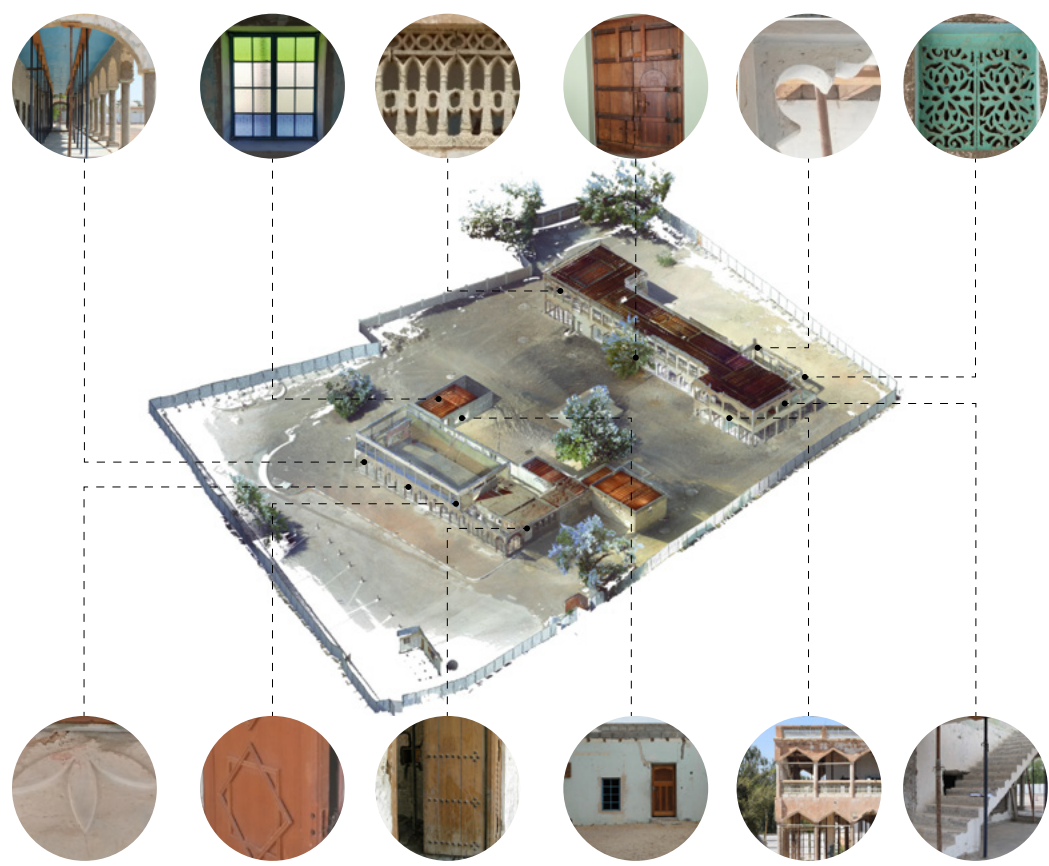
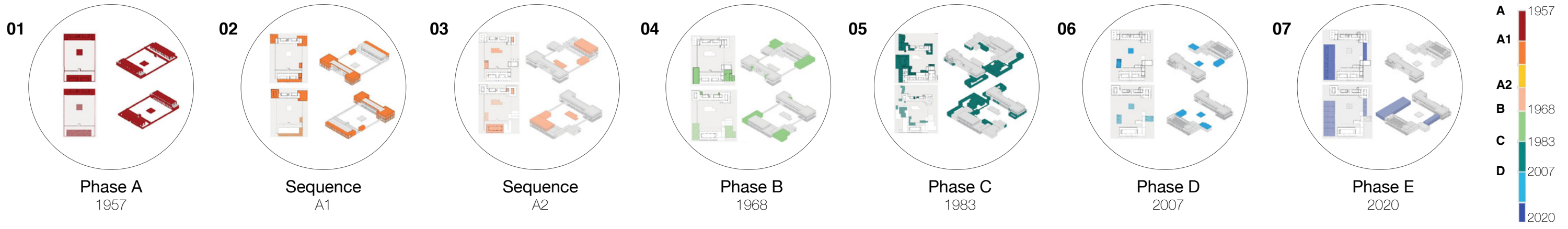
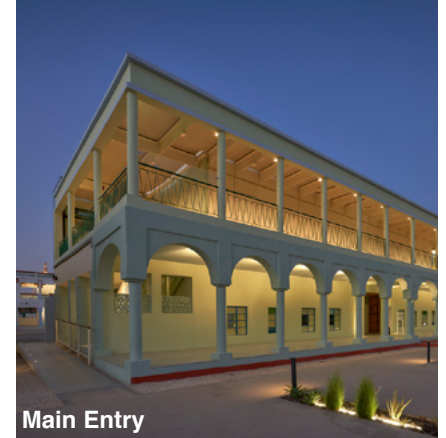


Bait Mohammed Bin Khalifa Al Ain, UAE

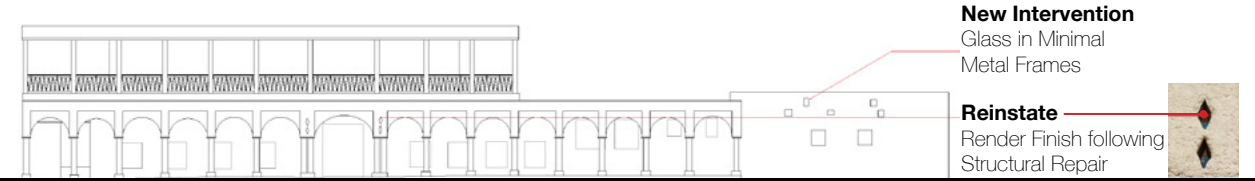
Bait Mohammed Bin Khalifa House Project is a cultural restoration project to preserve and rehabilitate a major building in the context of the UAE's recent history, as it is a tangible evidence of the 'Transition Period', the crucial period between the pre-oil and post-oil eras. The House is also an important landmark as it was located at the gates of Al Ain city, and it was the first visible house for people accessing Al Ain from Abu Dhabi. Furthermore, because it was built near a falaj, it represents a link between traditional pre-oil settlements (near the water sources) and the modern era (when the location of dwellings no longer depends on the availability of water).



Bait Mohammed Bin Khalifa
Existing Preserved Elements

- 1. Conserve**
Minimal work to hold an element in its current state and prevent further deterioration
- 2. Repair**
Adding or replacing material to return an existing element to its earlier state, or to enable it to perform its intended function
- 3. Replace**
Replacement of an element beyond repair/ no longer usable, either like-for-like or with improved performance to address an inherent defect
- 4. Reinststate**
Putting back a missing element as accurately as records allow and without conjecture
- 5. New Intervention**
A new element necessary to enable continued use of the building, or because records are insufficient to allow reinstatement of a missing element

Conservation Approach
Principles



Block A & B Existing Elevation

Proposed Elevation