

SIGNATURE RESTAURANT SUSTAINABLE CONSTRUCTION APPROACH

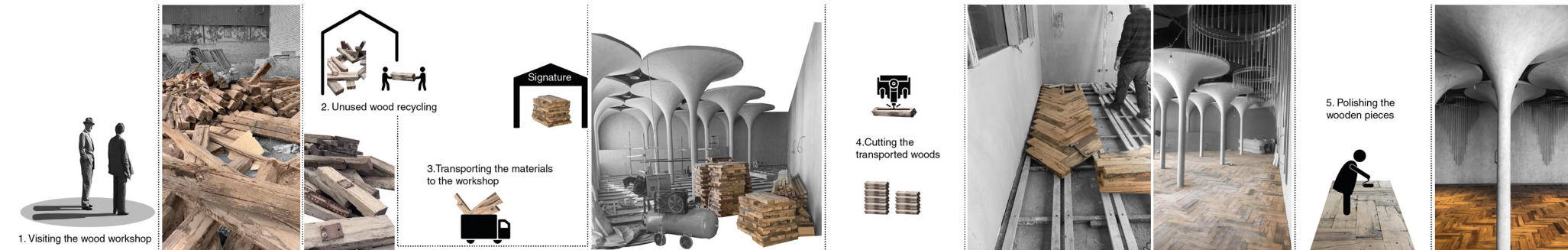
Construction Process

We have taken sustainability into account as a method of reducing our impact on the environment. examples include: **using local workers, building with local materials, searching for recycling options, managing waste production, minimizing destruction, and simplifying the process of construction.**



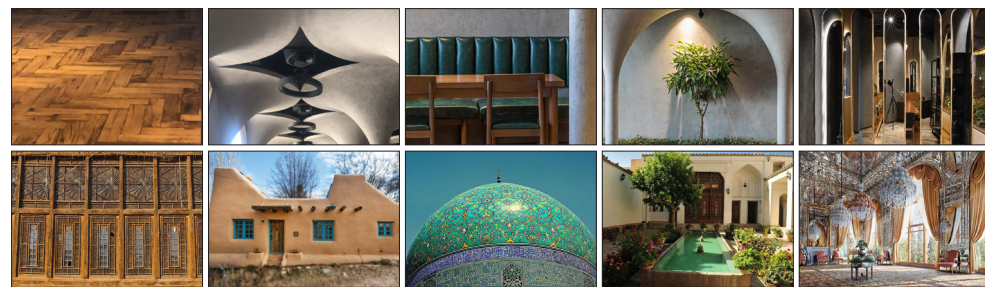
• Recycling Materials

We discovered that the warehouse of Isfahan rail station had a great depository of wood from the old railroad tracks. We saturated these track woods with oil to create high-resistance flooring. The recycling process involved sanding, cutting into the flooring pieces, installing, and final polishing.



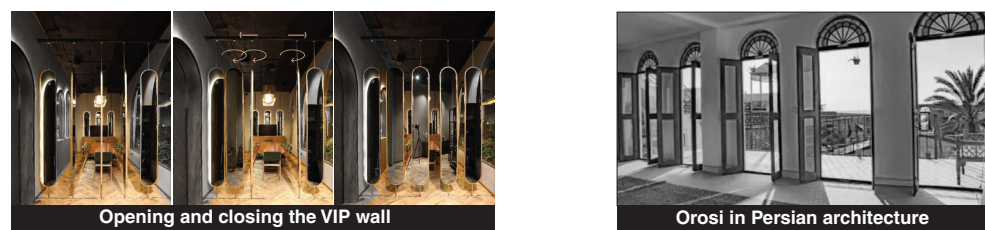
Interior Design with a Persian Taste

The interior design elements such as patterns, colors, and objects were chosen based on the experience of Persian architectural atmospheres.

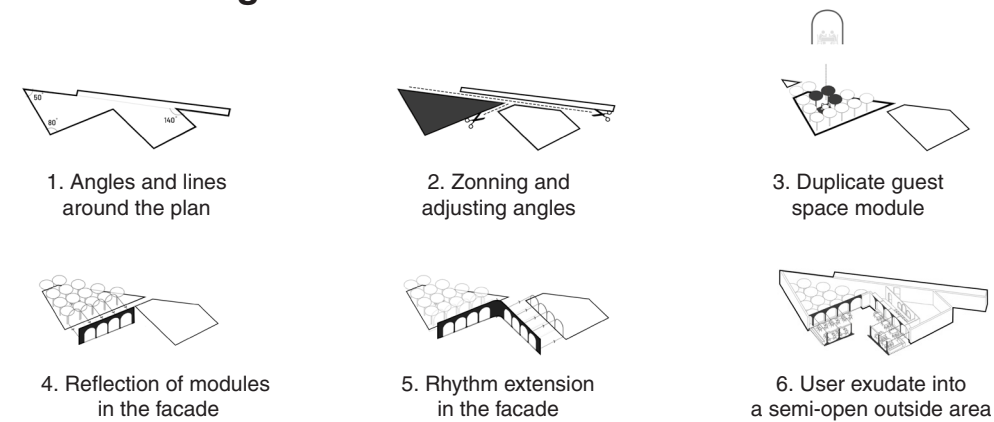


Flexibility

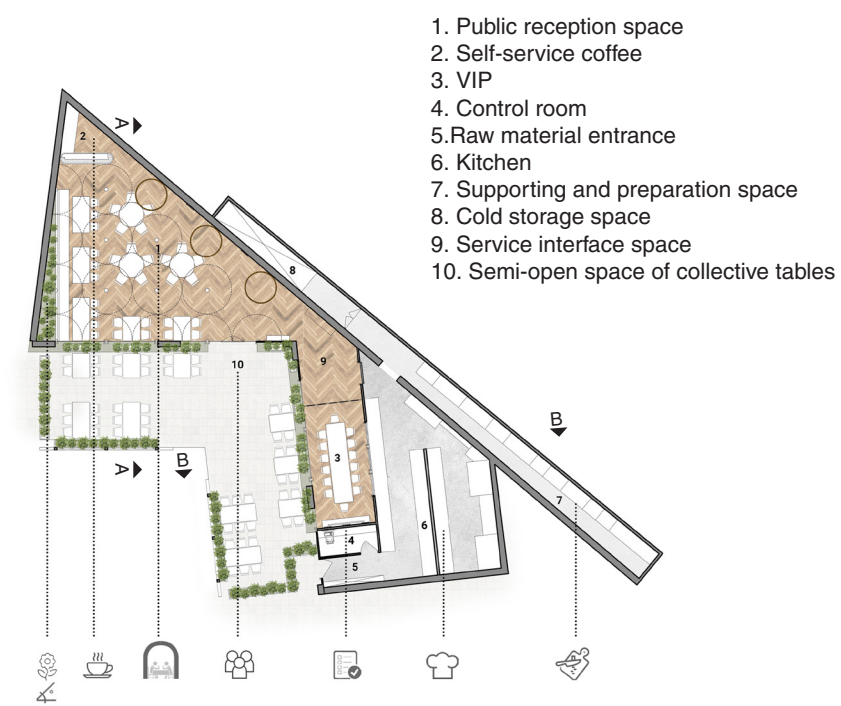
A set of moving mirrors- similar to the traditional Orosi in Persian architecture- open and close to enhance the flexibility of spatial experience.



Process Design



Plan



Connection

