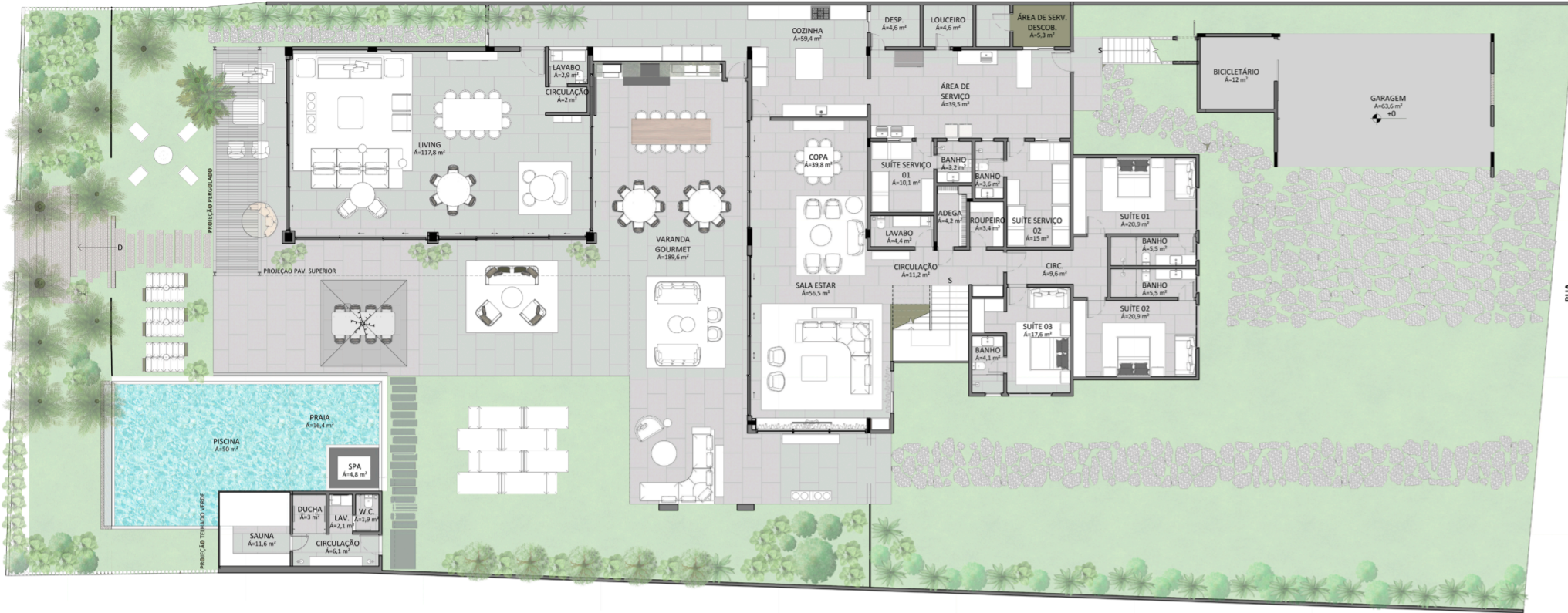


PANDANUS RESIDENCE



FLOORPLAN



MOODBOARD

Situated near the beach on a fascinating stretch of coastline, the Pandanus Residence's design is not only intended to capture views of this scenery, but also to be practical for the activities that accompany it.

The glazed facades of the living area allow the living space to open up, providing the occupants with complete integration between the living space and the outside elements.

A spacious balcony on the second floor also offers impressive views and functions as a semi-public intermediate space, a zone of connection with the landscape.

The interior palette features beach-inspired finishes such as wood paneling and slatted concrete, light-toned finishes, and lots of tropical plants throughout the house. This calmer palette contrasts with the art and design pieces displayed in the living room.

The stairway leading to the second floor of the house was detailed with thin wooden stakes and floating concrete steps, creating a rhythmic language. The glass enclosure illuminates the stairway, helping to brighten the interior and draw visitors upstairs as they move through the house.

