



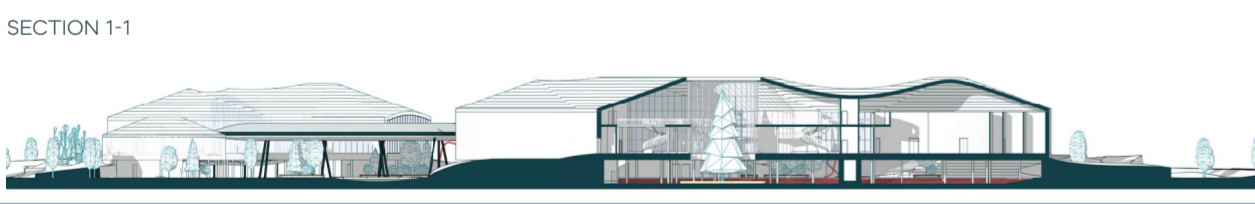
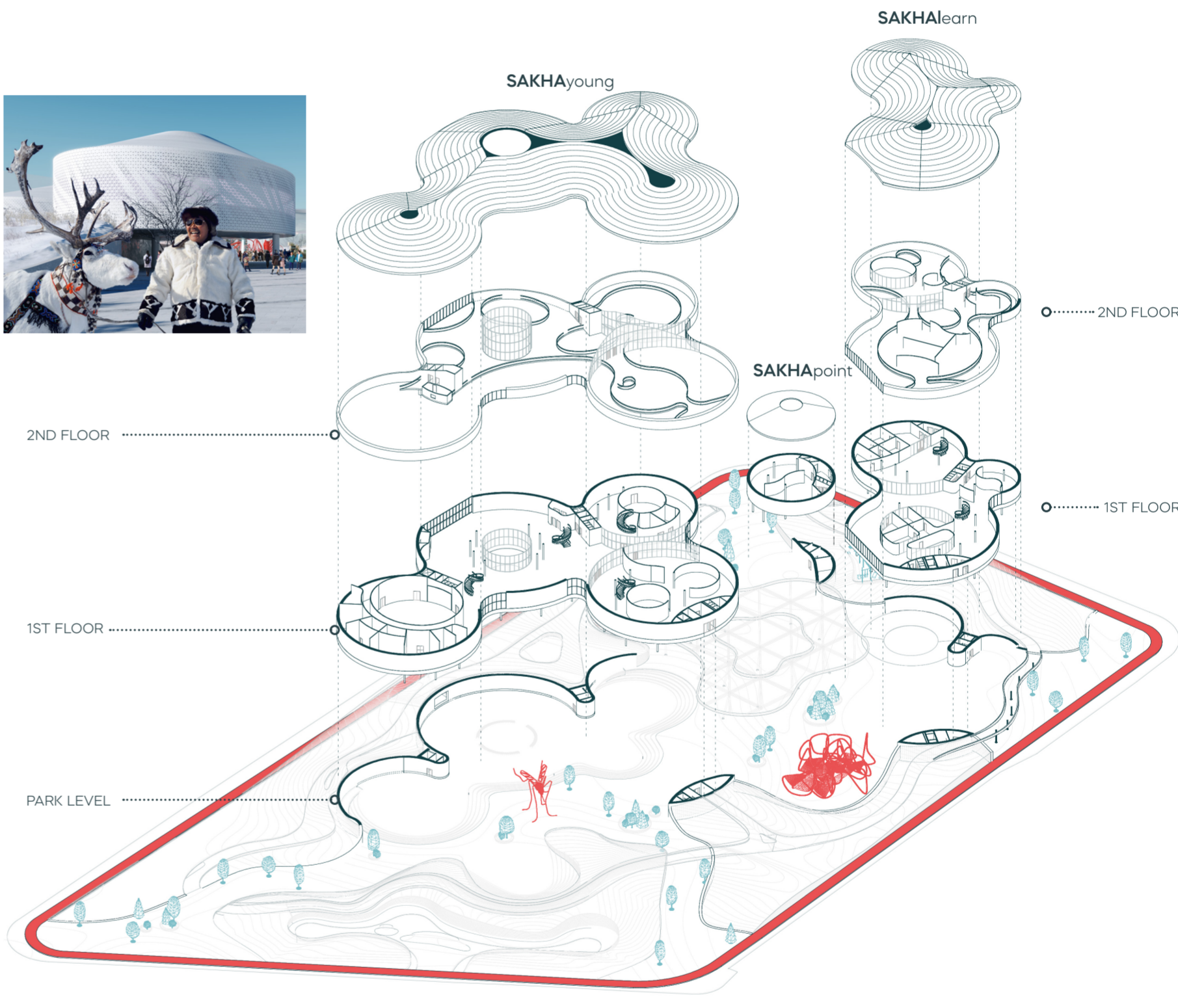
THE PARK OF FUTURE GENERATIONS YAKUTSK

The Republic of Sakha (Yakutia) is the largest administrative-territorial unit in the world with a territory of more than 3 million square kilometers in the Far East of Russia. This is a **unique place on Earth** known not only for diamonds and the extreme climate (temperature from -60 to +40 degrees), but also for its talented people with a distinctive culture. Yakutsk - the capital of the republic - is the largest city in the world, located on the permafrost (the population is 320 thousand inhabitants). Now in the city there is an acute shortage of public educational urban spaces, where young people could comfortably spend time all year round, socialize and develop creatively.

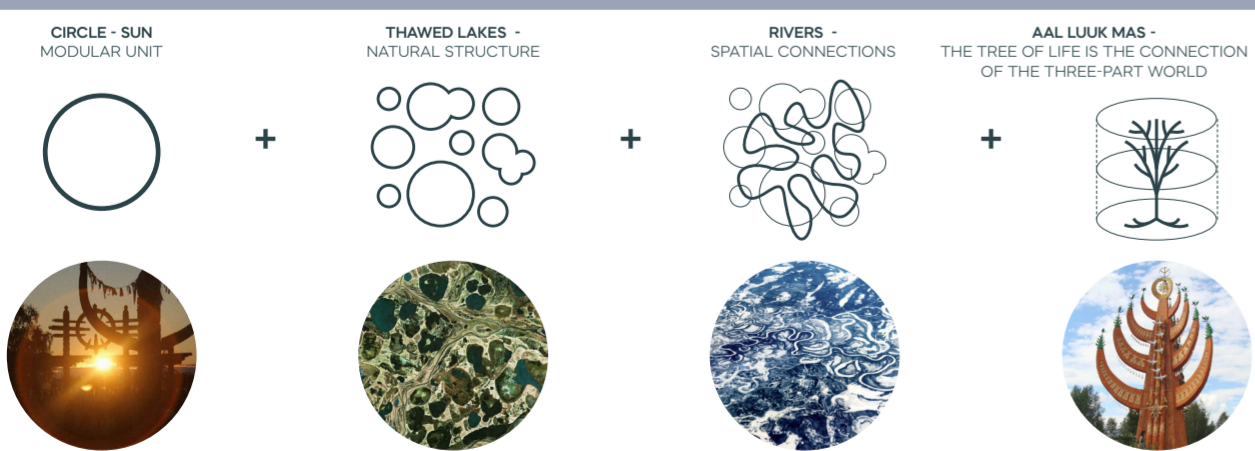
The park of future generations in Yakutsk is an **educational space of a new type**, combining the functions of the park and the citywide event center, focused on the development of talents and the maintenance of the Yakut youth. On the territory of 2.4 hectares, a system of outdoor and indoor spaces has been created in which universal exhibition spaces, a conference hall, coworking centers, training centers and other spaces for complex personal development are placed, ranging from private schools of supplementary education to free sites provided to young startups for the realization of their authorial products and inventions. **Training** spaces are actively combined with **entertainment and recreational functions**, as well as integrated into the **natural environment and landscaping**. On the territory there are plenty of opportunities for walks and sports, various events in the open air. The space takes into account the interests of all age categories of city residents, but is focused primarily on young people from a nearby university.

The spatial concept is based on the reflection of the Yakut landscape and **national cultural identity**. The prototype for the formation of open spaces was the incredible nature of Yakutia with its thawed lakes, meanders of rivers and permafrost crystals. The architectural concept is based on the modern rethinking of the ancient Yakut epic, cultural images, symbols and ornaments, and also visually interprets the typology of the traditional Yakut dwelling. **Advanced technologies and climate correction systems** that create a comfortable outdoor environment at any time of the year, thoughtful eventfulness and public involvement in the life of the Park ensure its successful year-round operation.

SAKHABlock is a universal modular architectural and landscape unit that sets new design standards and allows to build comfortable authentic public spaces in any city of the Far North and to fully unlock the potential of the Republic of Sakha and its inhabitants.



IDENTITY



UNIVERSALITY (FOR ANY CITIES ON PERMAFROST)

