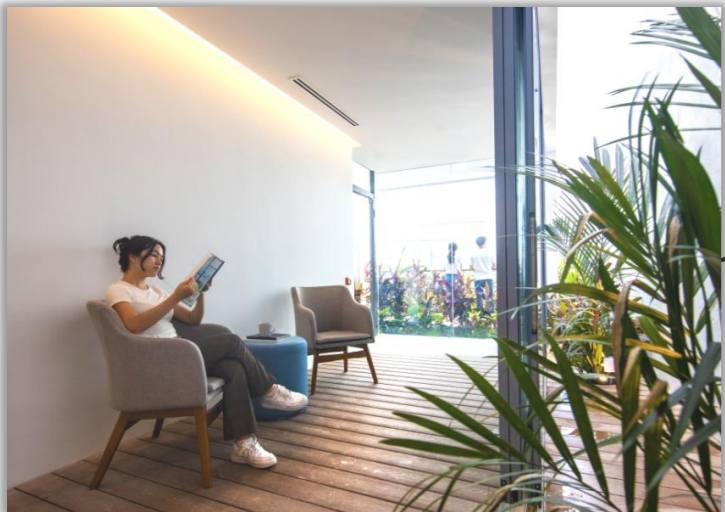




[SUSTAINABILITY] The Sky Bar makes use of natural ventilation to reduce the use of aircon cooling.



[ENVIRONMENTAL RESPONSE] The City View Terrace is one of the many open spaces where staff can rest and appreciate the city.



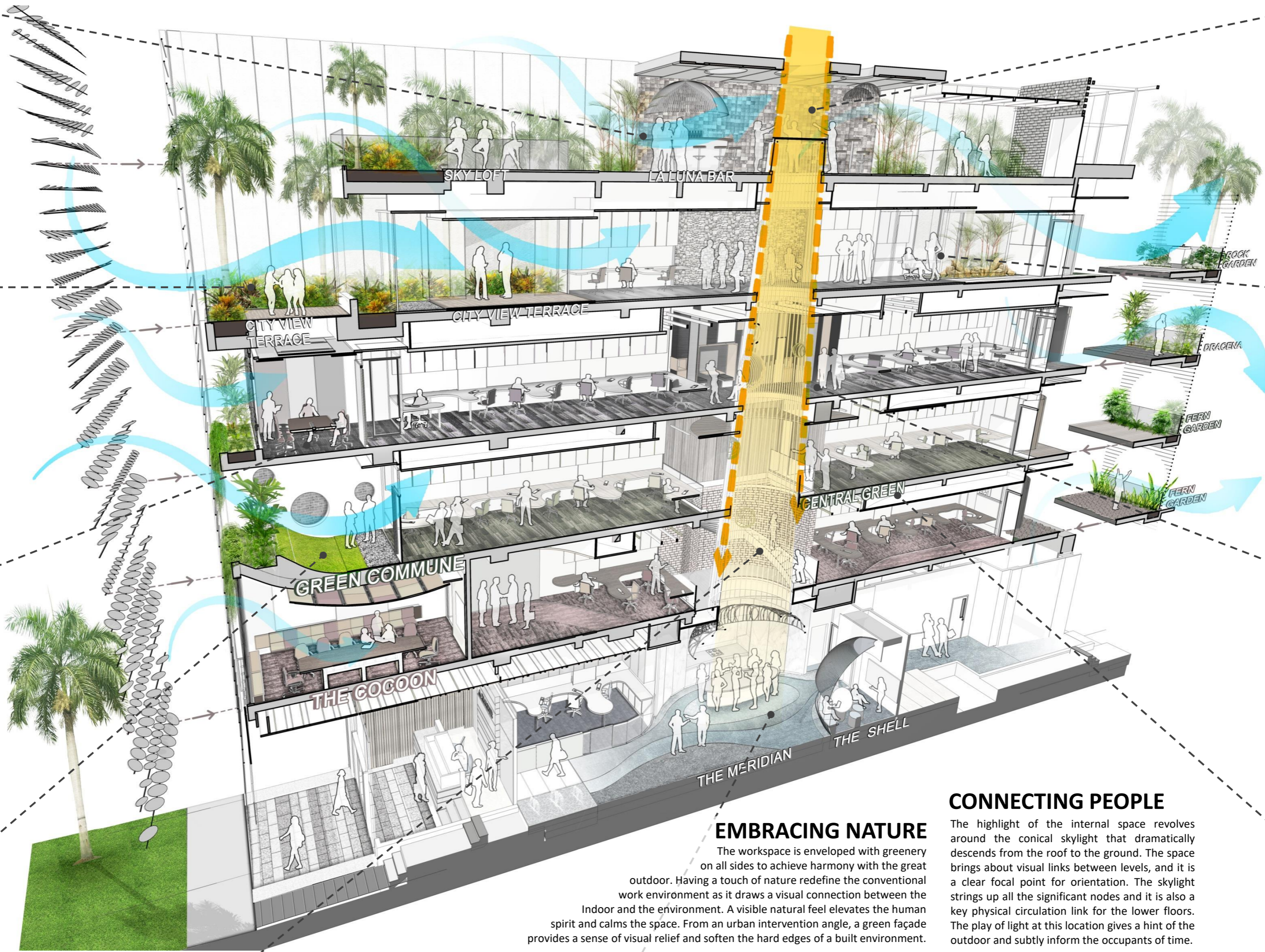
[SENSE OF PLACE + EMBRACING NATURE] Plenty of indoor greenery are planned throughout the building, creating a less stressful work environment.



[SENSE OF PLACE + ENVIRONMENTAL RESPONSE] The Cocoon is a unique cosy communal lounge for lunchtime breaks.



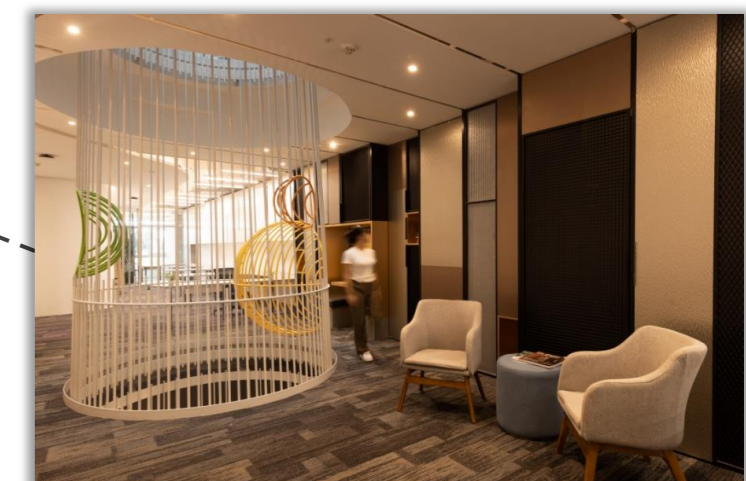
[SENSE OF PLACE] The aesthetics of every floor reflect different aspects of nature. This Boardroom reflects the dynamism and energy by using bright and warm hues.



[SENSE OF PLACE + ENVIRONMENTAL RESPONSE] The skylight brings light and connectivity to the otherwise long and narrow office.



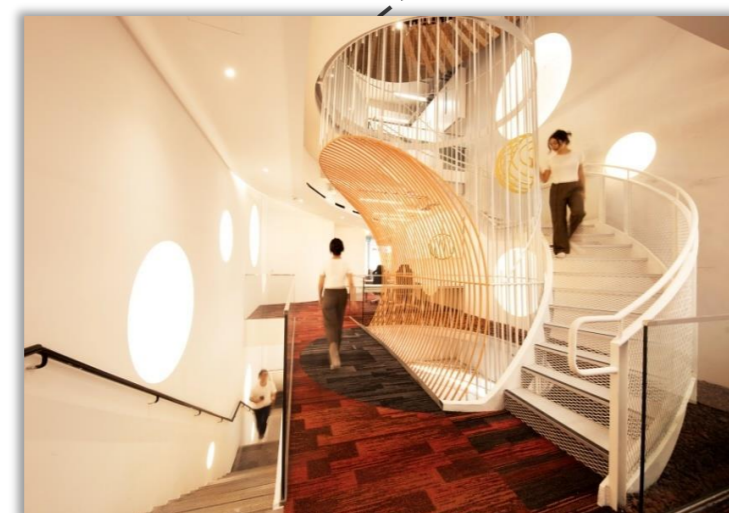
[SUSTAINABILITY] With every part of the office having a direct connection with natural light and nature, the environment is calmer, and also less reliant on artificial lighting.



[SENSE OF PLACE + ENVIRONMENTAL RESPONSE] Communal spaces are well-lit and welcoming by being around the skylight.



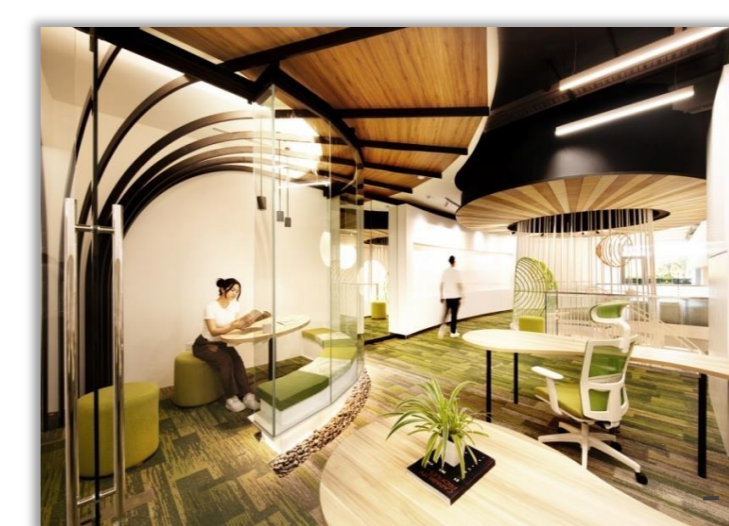
[SENSE OF PLACE] Every part of the skylight is designed with connecting people in mind.



[CONNECTIVITY] The skylight is linked with the central staircase, which creates better connectivity amongst different departments. Communal spaces are peppered around the skylight, which is the focal point.



[SENSE OF PLACE] At the end of the skylight is The Meridian, which is the most important communal space in the office, where guests are invited to take part in workshops.



[EMBRACING NATURE] Elements of greenery are designed throughout the whole office, to allow for a less stressful workplace.



[STRATEGIC USE OF MATERIALS] As this is a narrow plot, mirrors were purposefully used at key areas so that the office does not feel claustrophobic. A 5m plot that feels like 10m!

CONNECTING PEOPLE

The highlight of the internal space revolves around the conical skylight that dramatically descends from the roof to the ground. The space brings about visual links between levels, and it is a clear focal point for orientation. The skylight strings up all the significant nodes and it is also a key physical circulation link for the lower floors. The play of light at this location gives a hint of the outdoor and subtly inform the occupants of time.

EMBRACING NATURE

The workspace is enveloped with greenery on all sides to achieve harmony with the great outdoor. Having a touch of nature redefine the conventional work environment as it draws a visual connection between the indoor and the environment. A visible natural feel elevates the human spirit and calms the space. From an urban intervention angle, a green façade provides a sense of visual relief and softens the hard edges of a built environment.