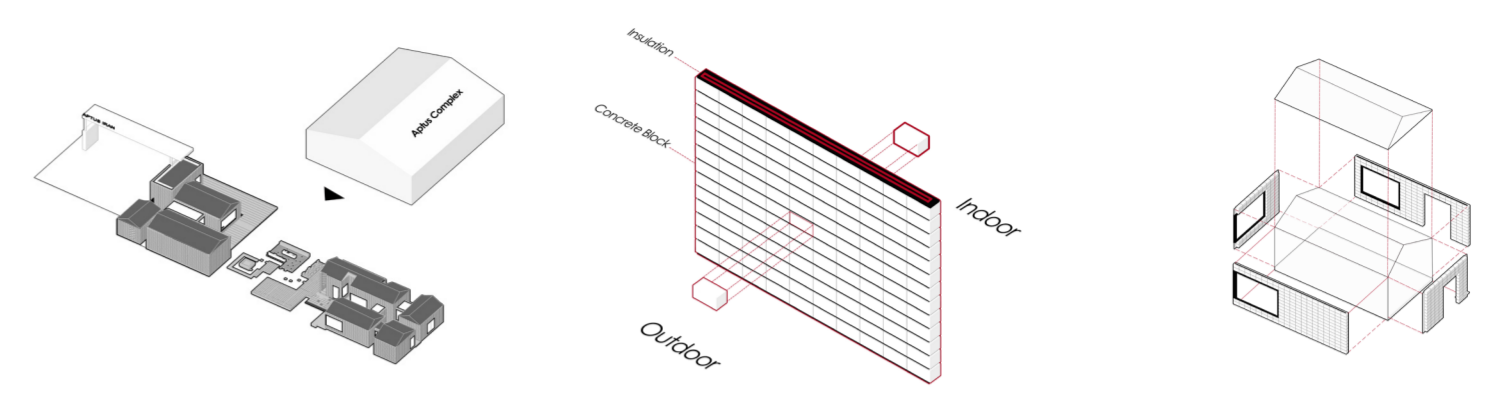
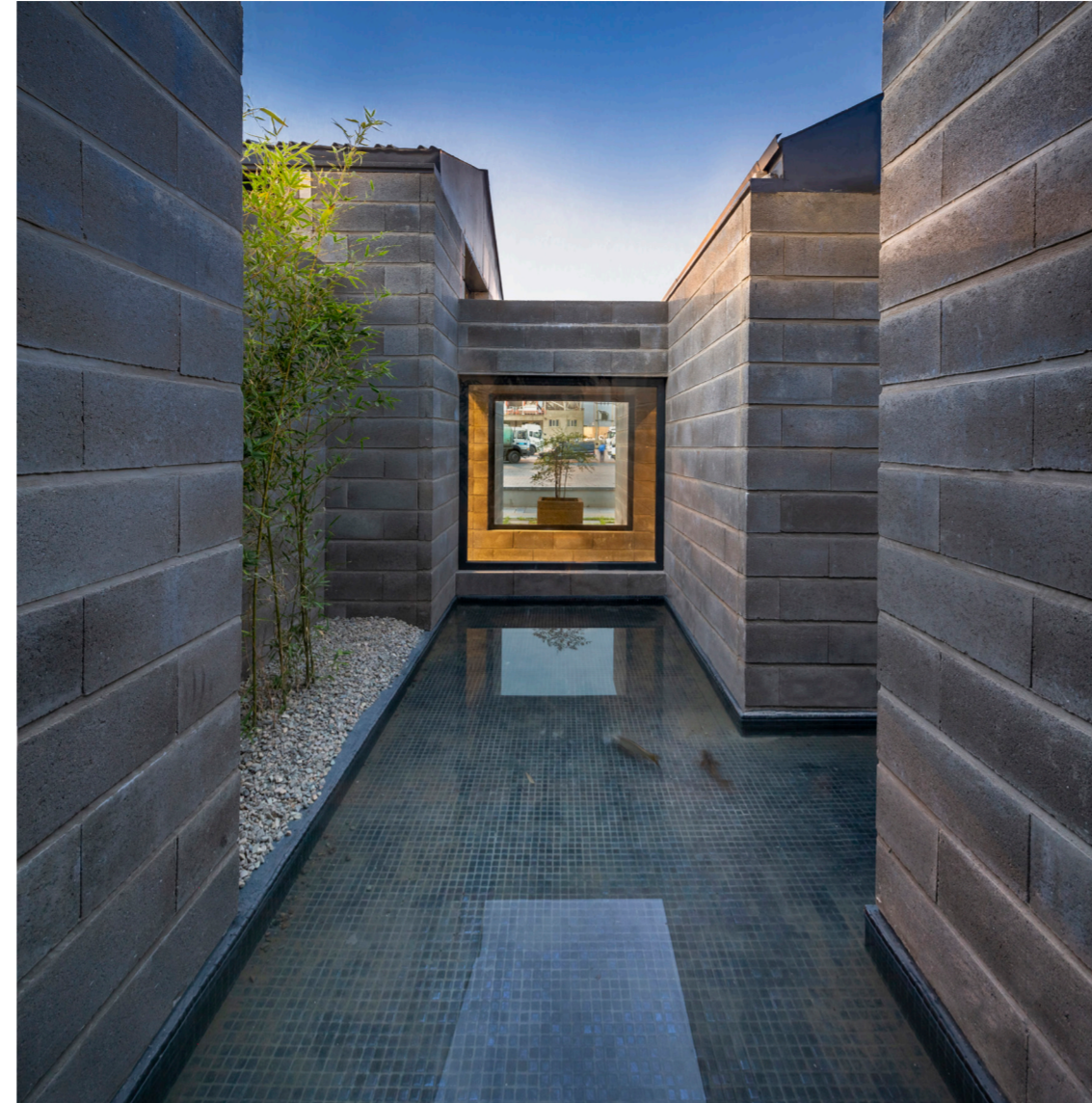


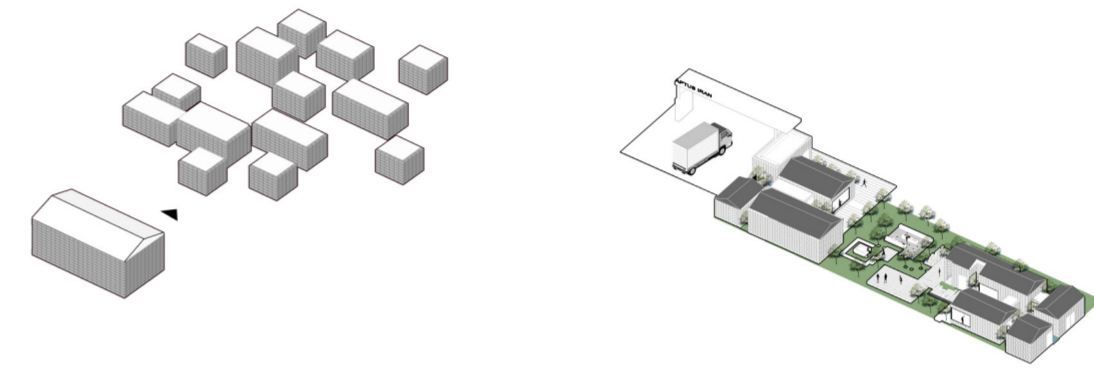
Aptus Factory Showroom

Karaj, Iran | 2019 - 2020
Commercial Category



Material Idea

Cheapening



Final Volume



Based on the initial design criteria, the created building volume forms the exterior and the interior landscape at the same time. Instead of creating a huge "box" surrounded by greenery, it was decided to break the volume into smaller boxes which are independent and characterized based on their function. The created voids between the boxes form greenspaces penetrating into the building.

A layered relationship between interior and exterior was formed through transparencies between the boxes. Limiting building materials to a single block enhances the perception of the exterior atmosphere and creates a varying quality of natural light during the day.

There are a number of other concrete block manufacturers in the neighborhood of Aptus factory. This project could define a simple pattern for this urban fabric which is not only cost efficient, but also enhances the relationship between the built environment and the greenspace.