



ART OASIS

Sharjah - UAE



Disconnect. To Connect.

Cultural oasis celebrates humanity's strength and purpose

A new architectural approach that helps Sharjah to celebrate its heritage and raise awareness of the importance of maintaining all the layers of its history and heritage. Aiming to change the notion of a museum as a building, into a series of connected spaces that give back to the public. Providing extra free space to the surrounding dense urban fabric. Curating the visitors experience from the mundane, to the spiritual.

To enhance engagement within the museum, the sunken masses within the landscape transforms a busy city into a calm and serene space. The building allows multiple uses and will support social interactions: beyond the functions, which can host any type of exhibition, the central core and the outside spaces can in fact host special exhibition and site-specific events.

Design Approach

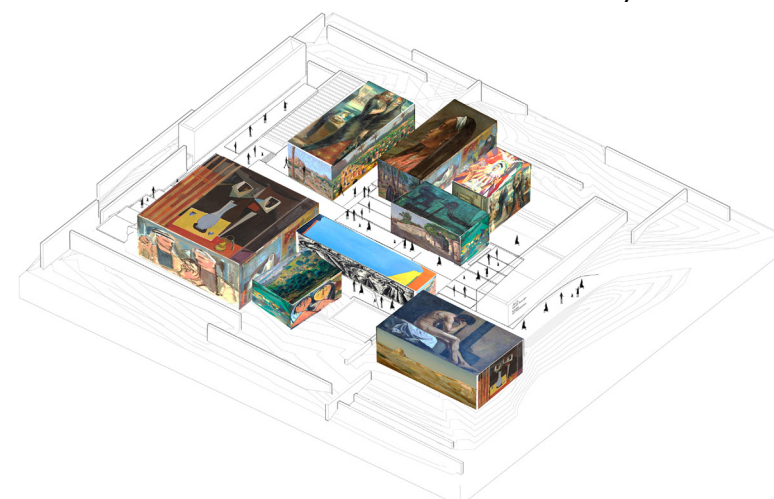
Oasis

Urban Fabric

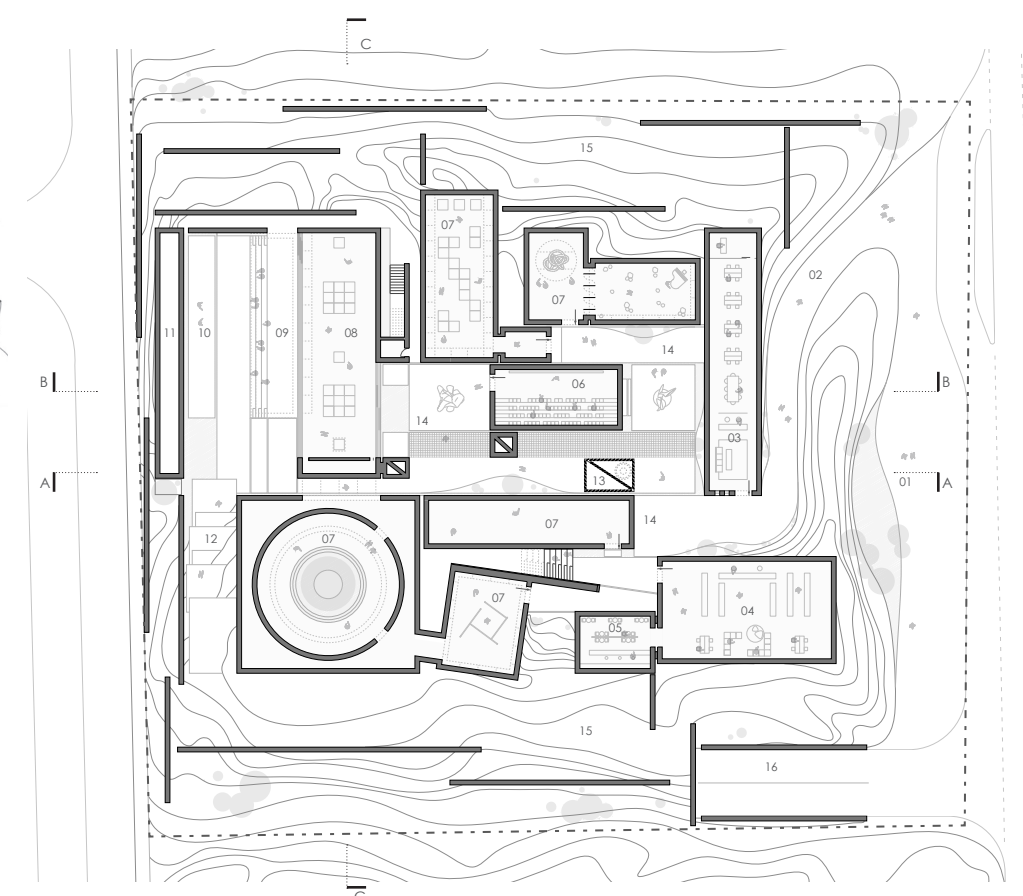
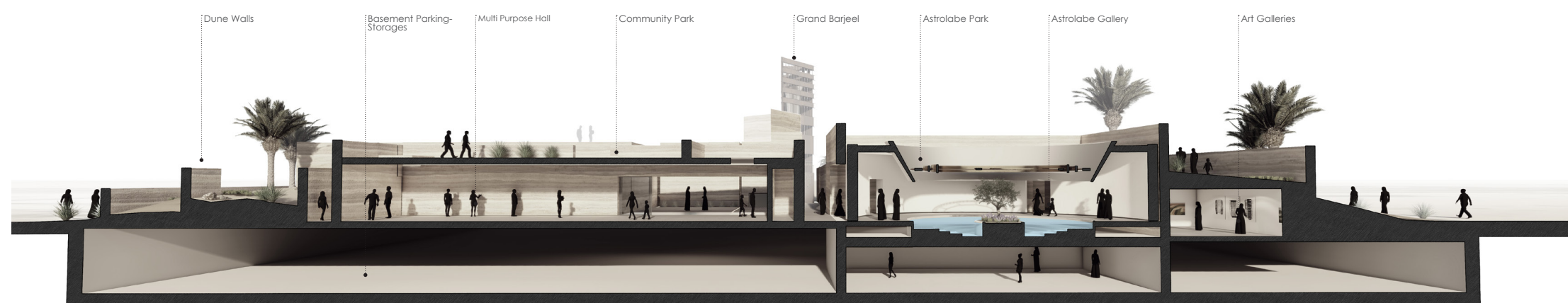
Excavation



A Place of social and urban solidarity



Experiential journey through the oasis tectonics



GROUND FLOOR PLAN

- 01 Arrival Oasis
- 02 Arrival Plaza
- 03 Administration
- 04 Library
- 05 Cafeteria
- 06 Film Screening
- 07 Exhibition Galleries
- 08 Multipurpose Room
- 09 Amphitheatre
- 10 Stage
- 11 Backdrop
- 12 Platforms
- 13 Grand Barjeel
- 14 Outdoor Showcasing
- 15 Dune Park
- 16 Basement Access

ART PLAZA



MEANDERING ENTRANCE

