



The new office building Ferrum 1 (Block 16) stands on the historic site of the former Rossiya factory in St Petersburg's Polustrovo district. For more than ten years now, the former industrial site has been undergoing extensive redevelopment under the direction of the development company Teorema. In the course of this, TCHO-BAN VOSS Architekten have already realised the multifunctional commercial campus House Benois (2008), the office complex Seasons-Ensemble (2013) and the residential complex Five Stars (2016) on this site. Opposite Ferrum 1 (Block 16), Ferrum 2 (Block 17) is being built with an identical façade solution and a landscaped inner courtyard.

The seven-storey Ferrum 1 business centre is one of the first buildings in Russia to be constructed with a sculptural Corten steel façade. This corrosion-resistant and extremely durable building material with its characteristic rust-red patina and velvety texture gives the building a particularly striking, expressive appearance. The theme of materiality, one of the most important aspects in architecture, was the focus when designing the façade. The name of the office building „Ferrum“, Latin for iron, is a reference to the material structuring the façade, but also at the same time a reference to the history of the former industrial site on which the new building was erected.

The sculptural façade is constructed in a geometric grid and presents itself as a coherent, dynamic, organically flowing fabric of loose „warp and weft“ threads. Three-dimensional stripes span the rectangular building both horizontally and vertically. The alternation of flat and protruding modules creates the illusion of a plaiting. Viewed from the side, the horizontal lines at the intersections of the strips sometimes seem to dive beneath the vertical lines and

vice versa. At the corners of the building, delicate structural glazing alternates with the sharp-edged folds of the Corten, thus the steel seems to play around a body of glass. The building is crowned by a band of golden aluminium panels, whose sheen visually offsets the intense colouring of the main façade cladding. „Rust on the outside, gold on the inside“ is Ferrum's central design theme.

The building's main entrance is marked by a large portal, and the central foyer features double-sided structural glass that fills this space with light and visually connects it to the surrounding park. The colour design of all foyers follows a two-tone concept, with the theme of „gold on the inside“ coming into play here. Thus, shiny gold lift portals alternate with metal surfaces in cold grey. The wall coverings are made of printed glass.



Ferrum 1, Saint Petersburg

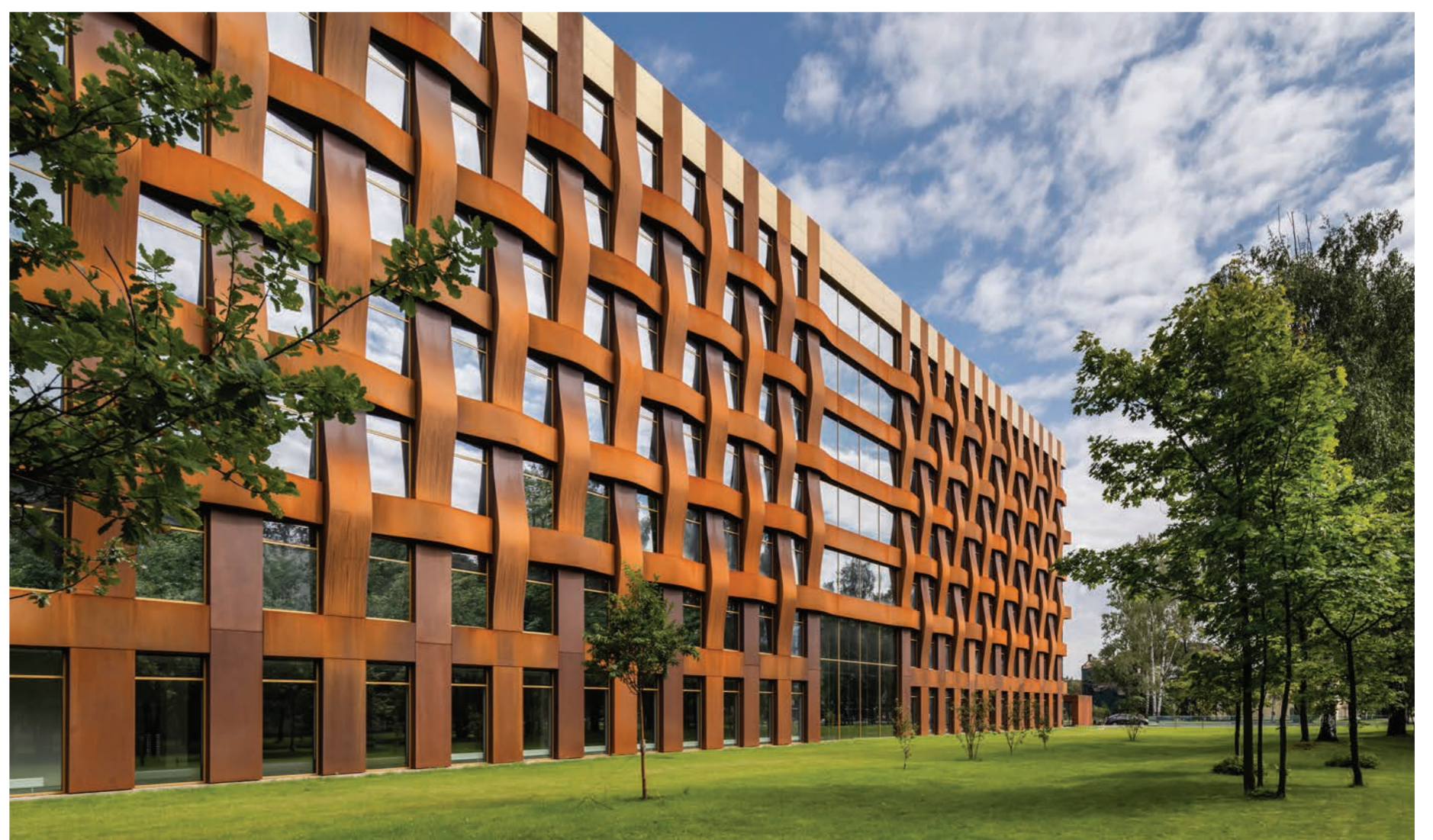
Design of the façades and foyers of a new seven-storey office building

Address: Sverdlovskaya Naberezhnaya, 44 B, Block 16, 195027 Saint Petersburg, Russia

Client: Teorema (Business Park Polustrovo Ltd), Saint Petersburg
GFA: 7,965.00 sqm
Completion date: 08/2021
Service stages: 1-8 (Façades and foyers)

General contractor: Teorema (Business Park Polustrovo Ltd.), Saint Petersburg
Project management: Teorema (Business Park Polustrovo Ltd.), Saint Petersburg
Landscaping: Teorema (Business Park Polustrovo Ltd.), Saint Petersburg
Structural engineering: Nord Fassade, Saint Petersburg
Corten steel: SSAB, Saint Petersburg
Windows/doors: Guardian Glass, Moscow
Aluminum frames: Reynaers, Saint Petersburg
Lifts: Mac Puar S.A, Moscow
Assembly lifts: Schtihmas, Saint Petersburg

Photographer: Ilya Ivanov



Ferrum 1, Saint Petersburg

Design of the façades and foyers of a new seven-storey office building