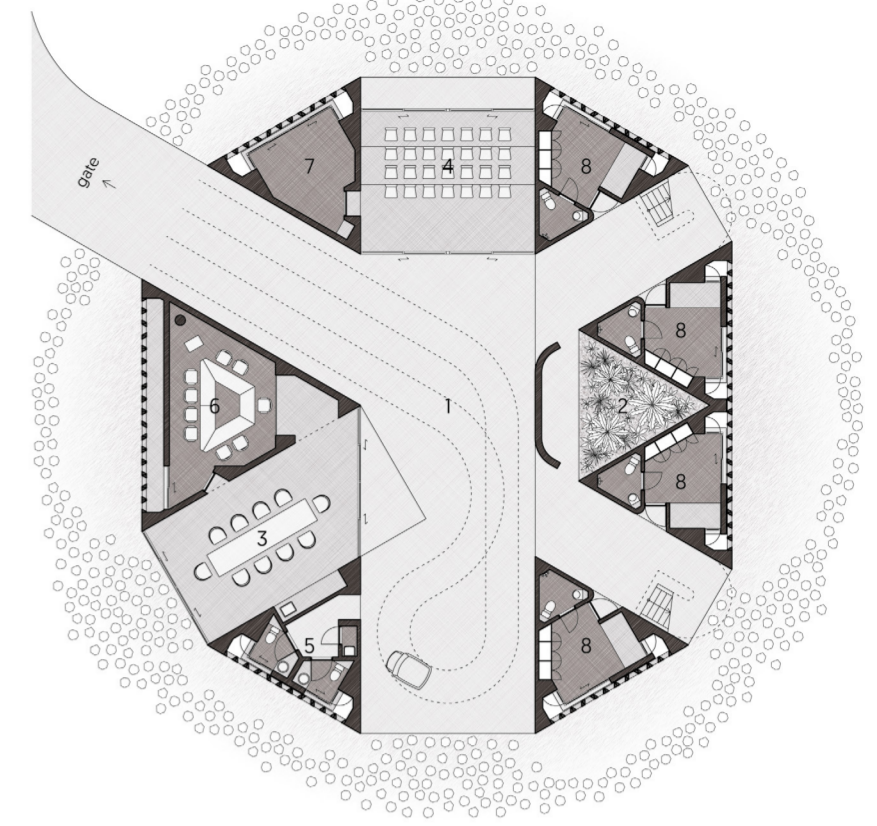
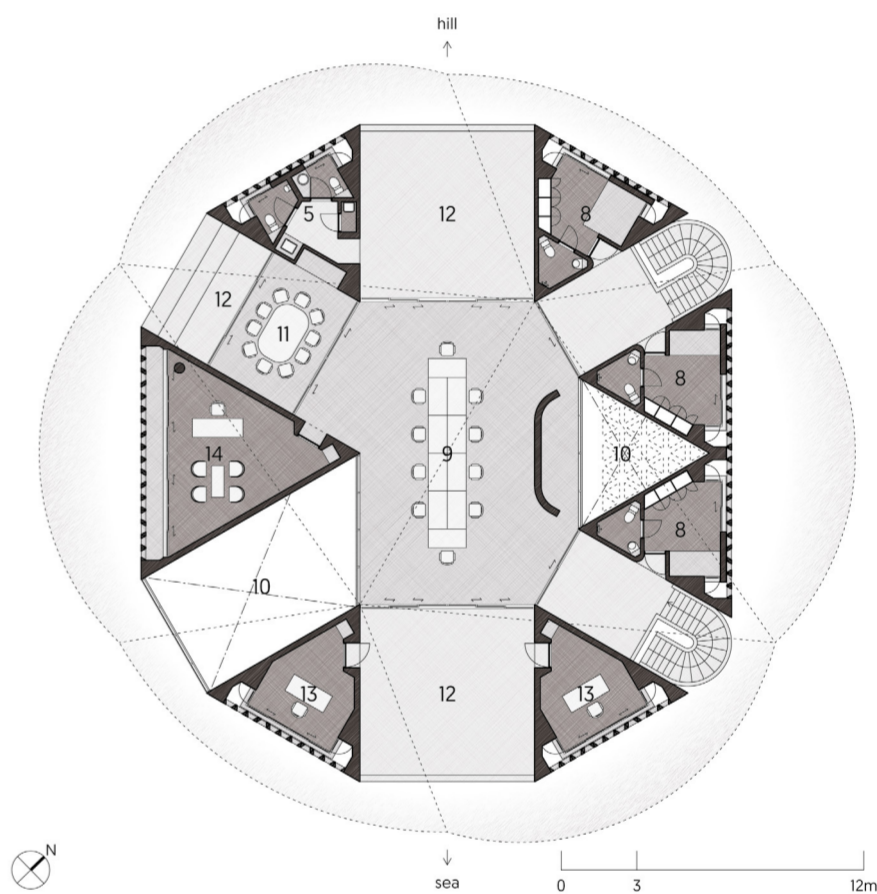


The Kaleidoscope

Location: Quang Binh, Vietnam
 Program: Office and Residence
 Area: 960m²
 Completion: May, 2022



1F Plan S=1:300

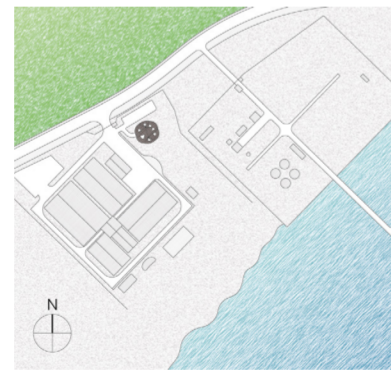


- 1 pilotis
- 2 garden
- 3 parlor
- 4 conference hall
- 5 lavatory
- 6 board room
- 7 security room
- 8 bedroom
- 9 central office
- 10 void
- 11 reception room
- 12 balcony
- 13 private office
- 14 director's room

2F Plan S=1:300

General context

The Kaleidoscope is the living and working building located at a factory site in central Vietnam. The surrounding region is well known for its severe climate: a hot wind blows throughout the dry season and typhoons and floods during the rainy season. The building is placed between the hill and the sea, and frames a series of diverse—kaleidoscopic—views in directions and times. The project aims at creating a protected space from the harsh tropical climate, and enhancing the user's contact with nature through various architectural devices.



Site plan S=1:10000

Conical roof and Floating slab

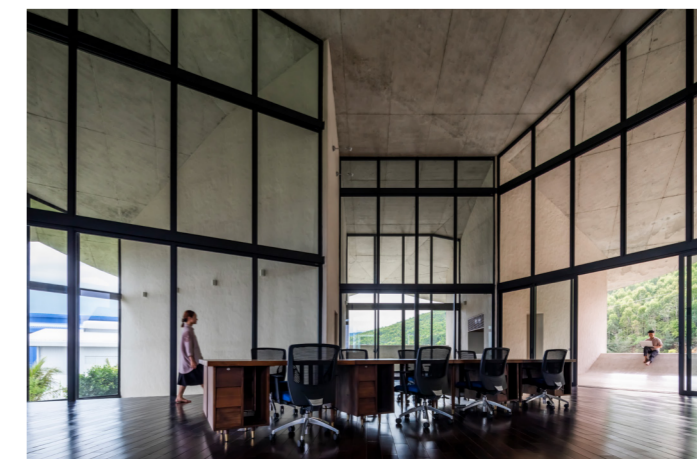
Resembling a "nón lá", a traditional farmer's hat of Vietnam, a large conical roof casts shadows on the entire building. The ventilated cavity between the double layered roof functions as a natural heat insulator against the sunlight, while the deep eaves enable the central space's windows to remain open even during the rains. The main function of the building is placed at the center of a floating slab, which keeps the space protected from the ground moisture.



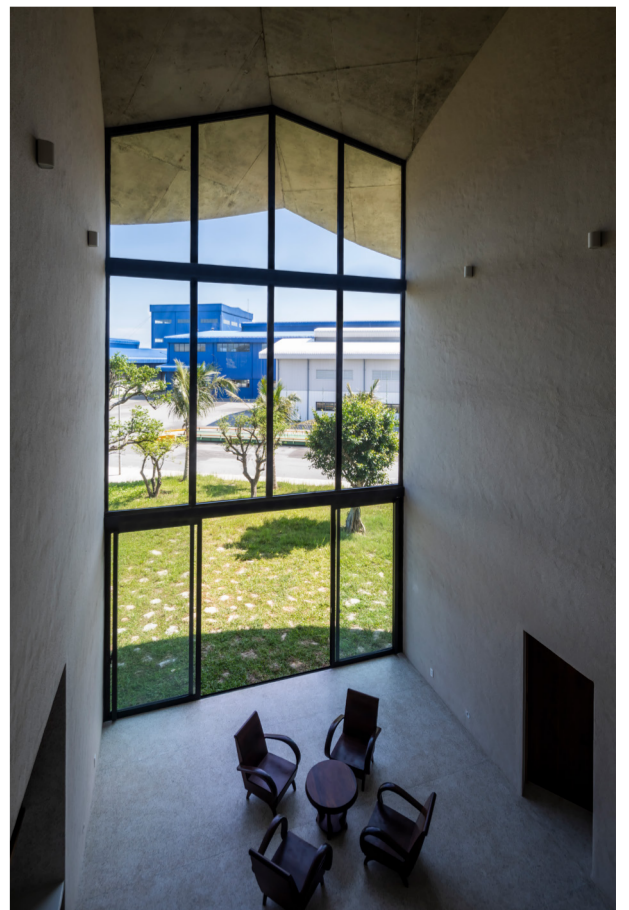
Floating slab

Cavernous in-between space

Allowing for natural ventilation throughout the building and framing the surrounding scenery, solid walls are arranged perpendicularly to the roof periphery. These form a series of V-shapes to cut out triangular private rooms open towards the outside, while defining a large in-between space that is used for the central office and other gathering functions. The cavernous quality of the central office allows for constantly changing natural light conditions.



The central office



Residents' parlor



The building located between the hill and the sea



Conical roof