



# QANAWAT HQ

THE WORKPLACE MEETS THE GARDEN

The rays of the sun beam down through the spaces which make up the Qanawat headquarters, powering and illuminating the creativity of a new generation of entrepreneurial spirit, forging forward for the benefit of humankind in the wake of the global pandemic.

Fueled by solar energy - and with natural light reaching into both office areas and the interior gardens, which facilitate movement and interaction of the personnel within - the structure is designed with sustainability and innovation at its core.

It reaches forward to a post-Covid 19 world where personal safety is a paramount factor in any architectural design. Sited in Dubai Studio City, it rises up four floors, with the top two given over for the running of Qanawat. And the remaining areas offer secure working environments for those individuals, start-ups and established companies which seek inspiration in the form of interaction with other like-minded professionals.

**THE WORKPLACE MEETS THE GARDEN**  
Open and community spaces facilitate this human connectivity, drawing in people and providing the ambience to allow creative thoughts to flow, and ideas to be freely interchanged, whether under shady vegetation in the purpose built gardens, or over a coffee in the café or the restaurant

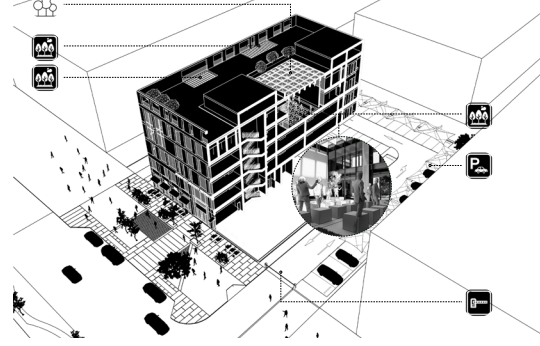
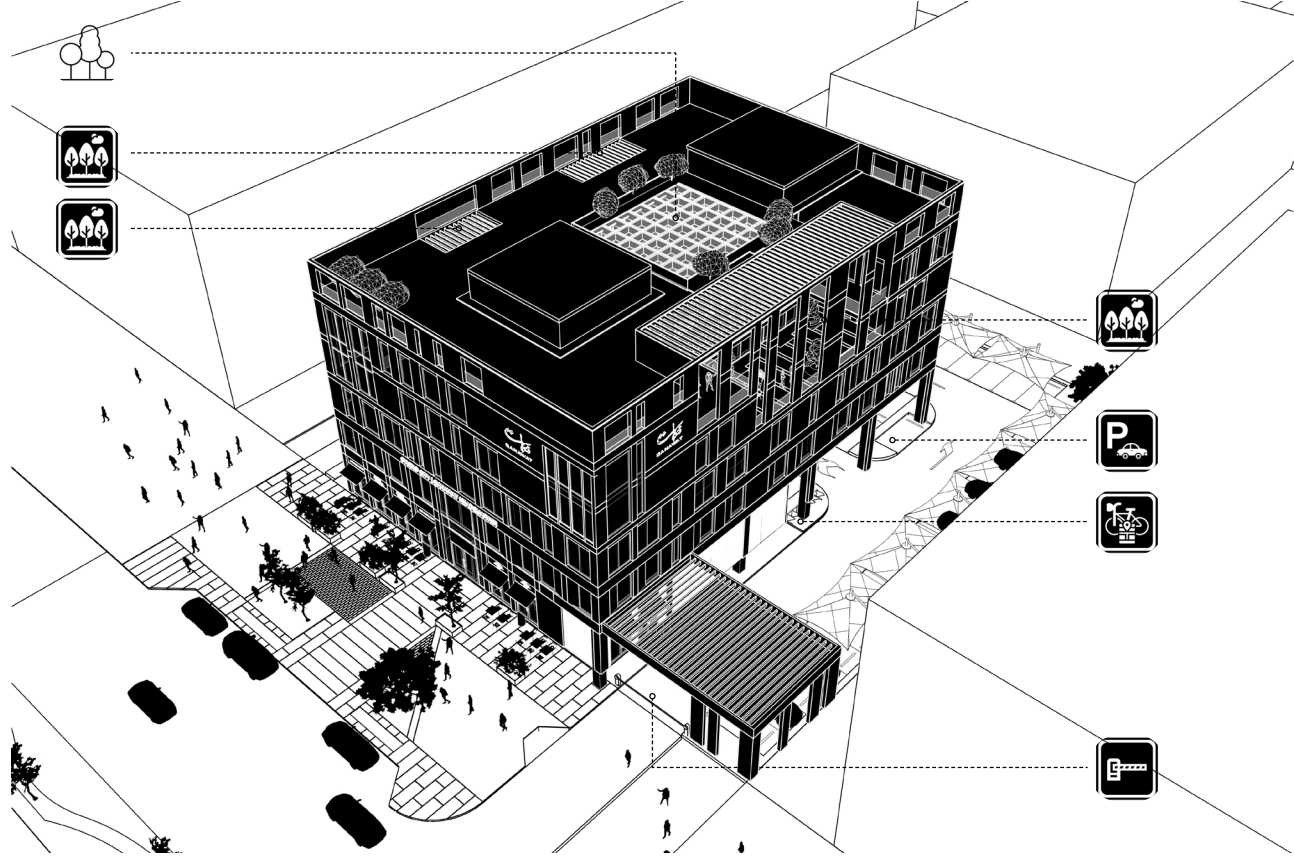


CONTEXTUALISM

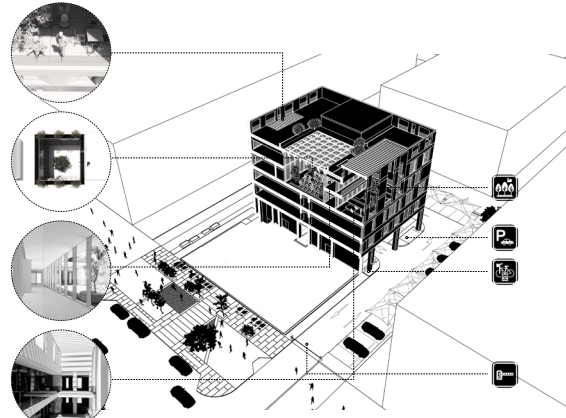


CONTEMPORARY REGIONALISM

The HQ is a celebration of the sun, using the abundant daylight to create a special ambience within. Reinterpreting the traditional Arabic Courtyard



Longitudinal Section

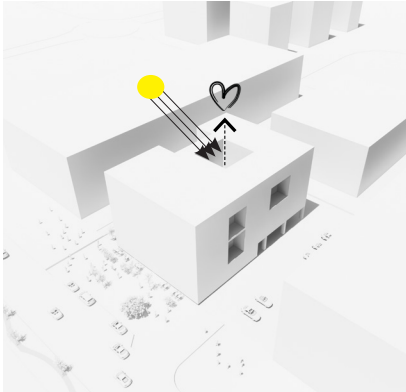


Cross Section

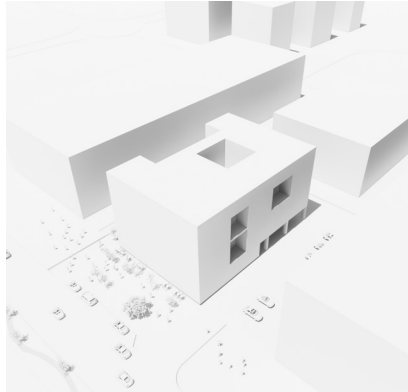
## The post-pandemic office: Qanawat



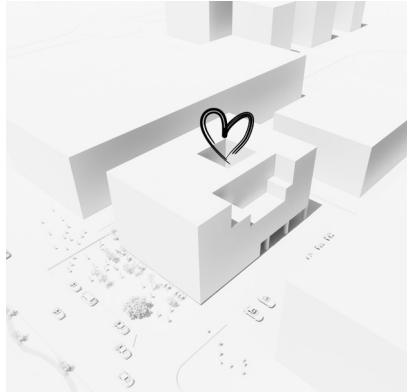
**Site**  
How to Build Sustainable, Healthy, and Profitable Office Buildings



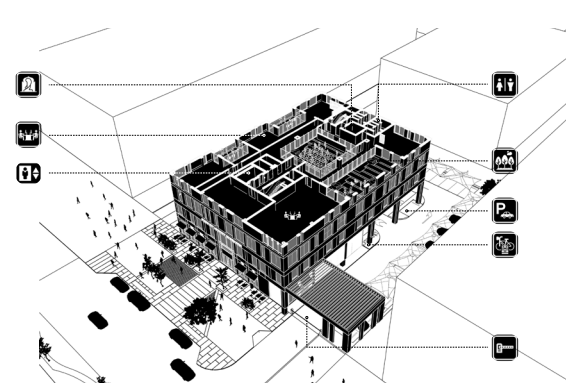
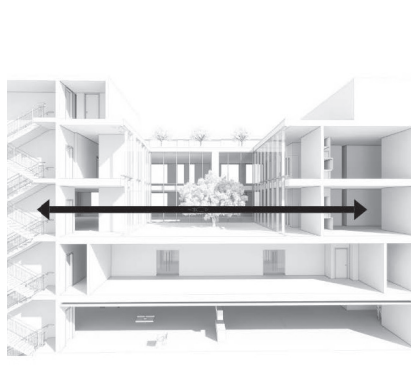
**Courtyard**  
The HQ is a celebration of the sun, using the abundant daylight to create a special ambience within. Reinterpreting the traditional Arabic Courtyard



**External Gardens-Option 1**  
The new kidsvaidel Community Center should relate to its immediate Surroundings and become a new meeting place for the local communities, students, neighbors and visitors



**External Gardens-Option 2**  
The new kidsvaidel Community Center should relate to its immediate Surroundings and become a new meeting place for the local communities, students, neighbors and visitors



In the Form-finding process, we are looking at processes in nature to uncover ways in which to organize building project. It is a study into the capability of discovering optimum form & dynamic adaptability. The beauty of the form does not have to be designed; rather it becomes an emergent property from the developed natural forms.

