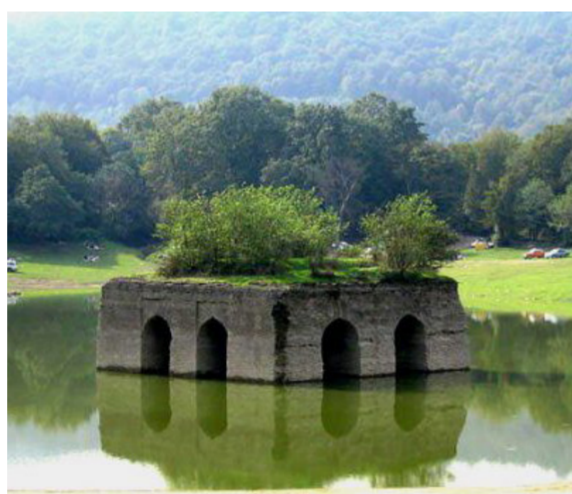
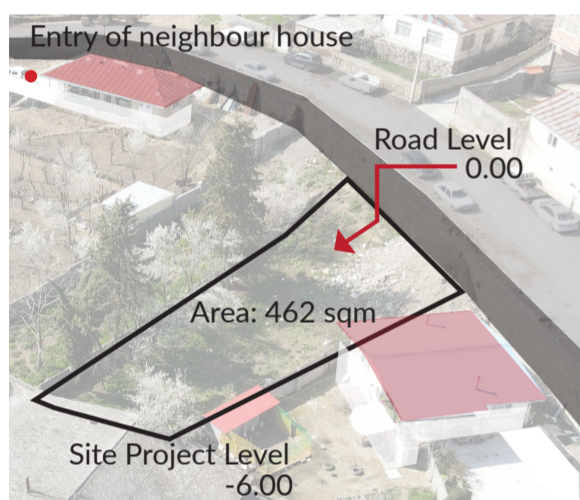


INVERTED HOUSE



'The Inverted House' project is located in one of the northern villages in Iran, near Pol-Sefid city. The project block of land is situated lower than the adjacent road, presenting design challenges. The client requested increasing the pad level in relation to the road and designing a forever home for their family.

The design process faced three main challenges: The earthwork for increasing the site level could result in obstruction of the view to surrounding areas, disturbing the existing topography, and excessive budget increase. The second challenge was to find a way to separate internal and external spaces, securing the project without obstructing the pedestrian view. The third challenge was to design according to the existing historical, social and cultural context of the area so that the building is influenced by the location of the site while affecting the neighboring environment in return.

Our solution for the first challenge was to design an inverted house! In this way, the house is accessed through the roof which also plays the role of the front yard, without raising the pad level. This idea maintained the open view of the natural landscape and help to lower the construction costs. Traditionally the houses in the village did not use walls on boundary lines. Rows of trees were introduced where a border between neighboring lots was required. New developments, on the other hand, replaced these green borders with masonry walls with stone blocks that disturbed the existing harmonious landscape. The project land is isolated from neighboring properties by stone walls on two sides. Our solution to the second challenge was to create an invisible fence to the frontage by offsetting the building 2.40 m from the adjacent road while using a bridge to access the house.

