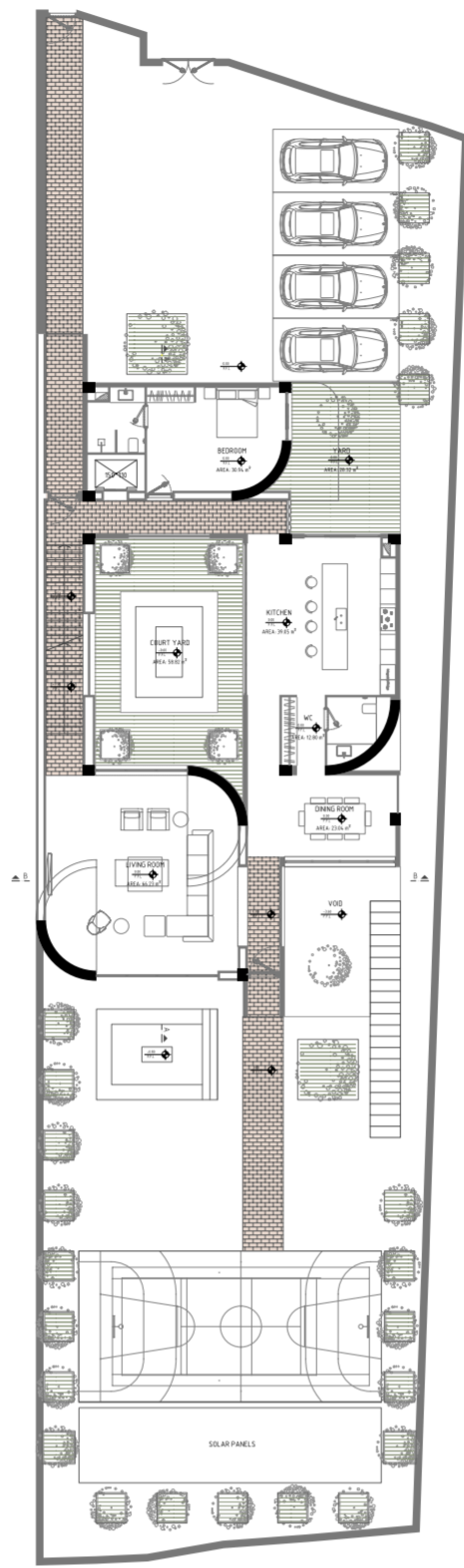
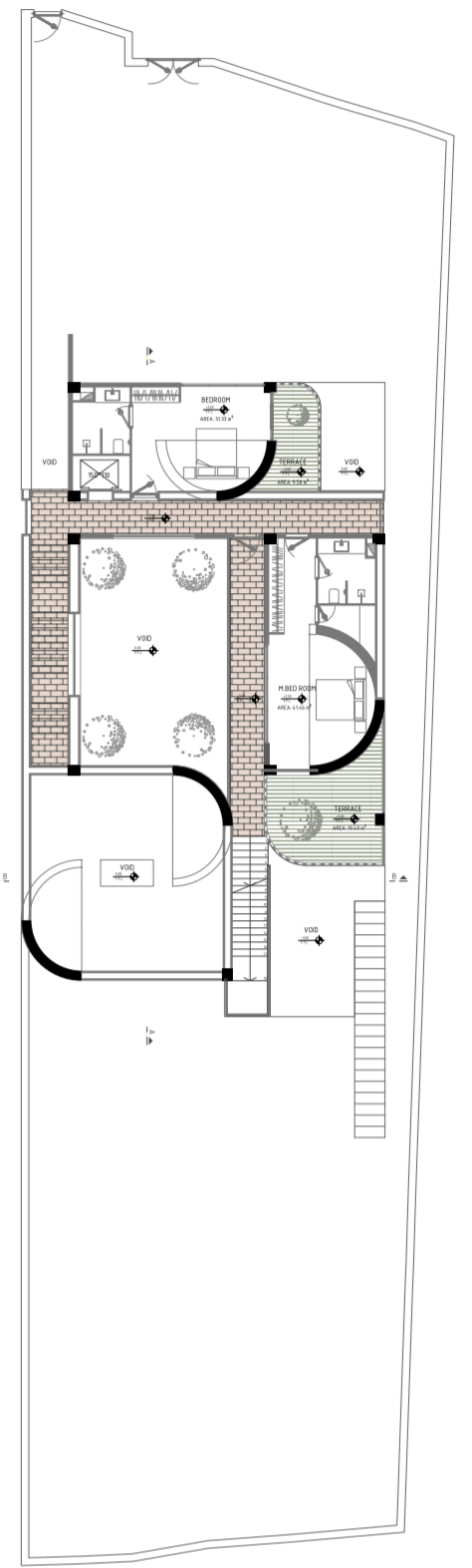




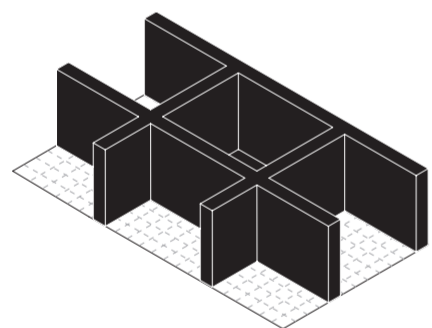
Due to the creation of multiple spatial quality, low land width and privacy instead of a simple void in the center of the project, this void was smaller and divided into several empty spaces and then in place according to the principles and rules of Iranian architecture. In the next stage, according to the location of empty spaces, Gholam-Gardesh and corridors were formed around empty spaces, and according to the needs of the project, these corridors were maintained or removed.



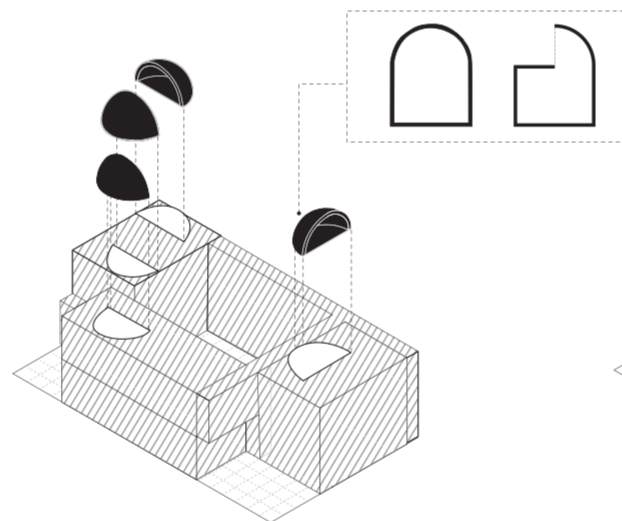
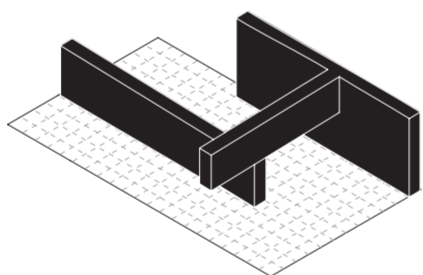
Ground Floor



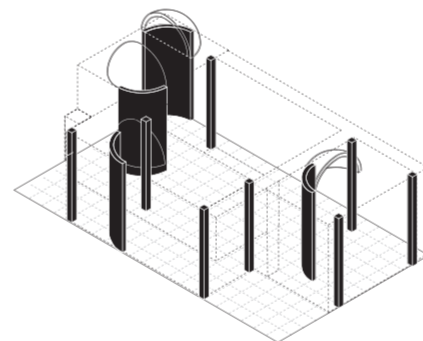
First Floor



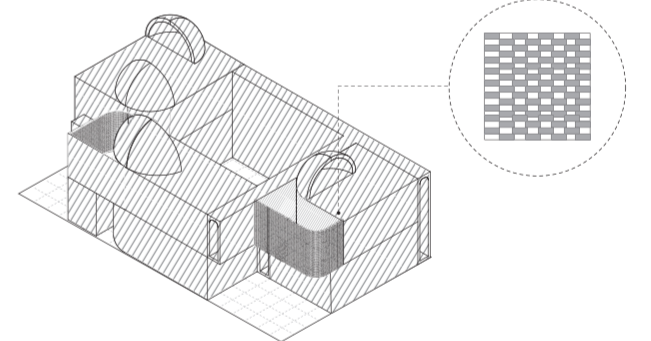
Gholam-Gardesh



Dome/Skylight



Tectonic
(shell + bearing wall)

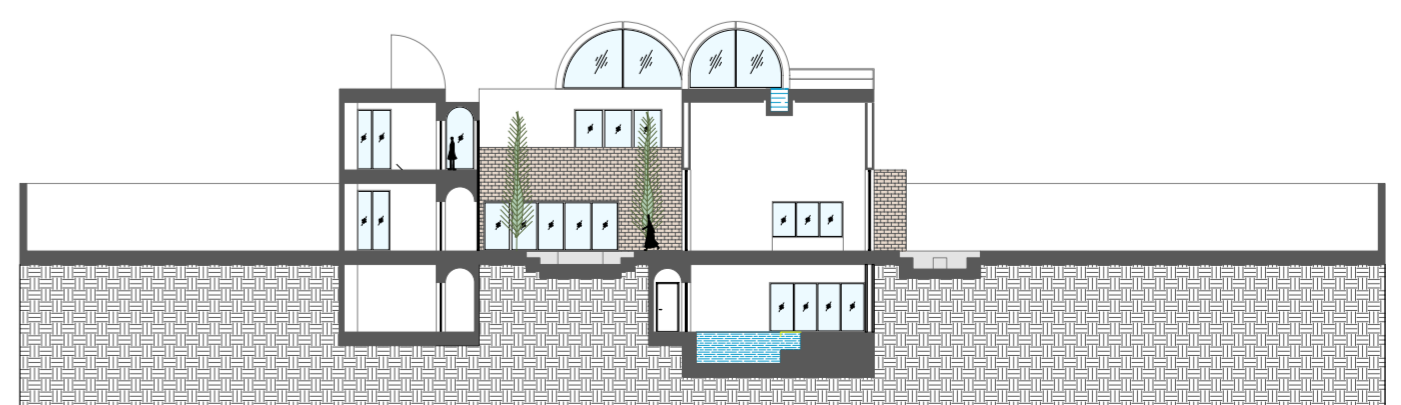


Semi Transparent Terraces



based on the position of the client and recognizing his needs, a diagram was formed to place the spaces in the construction area, so that public spaces in the project center and private spaces in the outer layers were defined.

With the morphological studies that were done on the elements and components of Iranian houses, an attempt was made to create a desirable spatial quality in the project by using these elements. The dome and the arch were the two main elements of the architecture of that area. The dome was used to create spatial quality and lighting and along its arch in the spaces in the form of structural walls as well as arches in the corridors and terraces of the project.



Section A-A